

# Envirotech East Pvt. Limited

An ISO 9001:2008, 14001:2004 & OHSAS:18001:2007 Company

Laboratory Recognised by Ministry of Environment & Forests, Govt. of India

Bengal Ambuja Commercial Complex,

UN-F 13, 1050/1, Survey Park, Kolkata – 700 075

☎ – 2418 8127/8128/8601; Fax – 2418 8128; email: [eeplkol@gmail.com](mailto:eeplkol@gmail.com)

Annexure – II

## ONSITE FUGITIVE EMISSION MONITORING RESULTS (PERIOD: OCTOBER, 2013 TO MARCH, 2014)

MONTH: OCTOBER, 2013

(A) LOCATION: RESIN RAW STORAGE AREA								
Date	Unit	PM <sub>10</sub>	PM <sub>2.5</sub>	SO <sub>2</sub>	NO <sub>2</sub>	Benzene	Toluene	Xylene
04.10.2013	(µg/m <sup>3</sup> )	82	37	5	20	0.18	0.22	0.21
07.10.2013	(µg/m <sup>3</sup> )	74	30	7	16	0.18	0.12	0.26
10.10.2013	(µg/m <sup>3</sup> )	60	26	4	21	0.16	N.D.	N.D.
14.10.2013	(µg/m <sup>3</sup> )	74	30	6	13	0.22	0.13	0.25
18.10.2013	(µg/m <sup>3</sup> )	71	33	5	19	N.D.	N.D.	N.D.
21.10.2013	(µg/m <sup>3</sup> )	87	37	4	15	0.26	0.28	0.38
25.10.2013	(µg/m <sup>3</sup> )	77	32	7	18	0.23	N.D.	N.D.
28.10.2013	(µg/m <sup>3</sup> )	73	31	6	13	0.19	0.17	0.35
(B) LOCATION: RESIN GROUND FLOOR (BLENDER AREA)								
Date	Unit	PM <sub>10</sub>	PM <sub>2.5</sub>	SO <sub>2</sub>	NO <sub>2</sub>	Benzene	Toluene	Xylene
04.10.2013	(µg/m <sup>3</sup> )	82	34	5	14	0.27	0.16	0.23
07.10.2013	(µg/m <sup>3</sup> )	74	29	6	20	0.17	0.14	0.2
10.10.2013	(µg/m <sup>3</sup> )	86	36	8	16	0.31	N.D.	N.D.
14.10.2013	(µg/m <sup>3</sup> )	87	37	5	18	0.24	0.13	0.38
18.10.2013	(µg/m <sup>3</sup> )	70	29	7	30	N.D.	N.D.	N.D.
21.10.2013	(µg/m <sup>3</sup> )	91	41	6	17	0.36	0.21	0.29
25.10.2013	(µg/m <sup>3</sup> )	73	28	9	19	0.23	N.D.	N.D.
28.10.2013	(µg/m <sup>3</sup> )	90	39	7	15	0.19	0.17	0.18
(C) LOCATION: FIRST FLOOR OF RESIN PLANT (REACTOR AREA)								

For ENVIROTECH EAST (P) LIMITED

## Envirofotech East Pvt. Limited

An ISO 9001:2008, 14001:2004 & OHSAS:18001:2007 Company

Laboratory Recognised by Ministry of Environment & Forests, Govt. of India

Bengal Ambuja Commercial Complex,

UN-F 13, 1050/1, Survey Park, Kolkata – 700 075

☎ – 2418 8127/8128/8601; Fax – 2418 8128; email: [eeplkol@gmail.com](mailto:eeplkol@gmail.com)

### Annexure – II

Date	Unit	PM <sub>10</sub>	PM <sub>2.5</sub>	SO <sub>2</sub>	NO <sub>2</sub>	Benzene	Toluene	Xylene
04.10.2013	(µg/m <sup>3</sup> )	70	28	4	19	0.17	0.13	0.22
07.10.2013	(µg/m <sup>3</sup> )	78	34	6	13	0.16	0.15	0.19
10.10.2013	(µg/m <sup>3</sup> )	63	26	4	21	0.31	N.D.	N.D.
14.10.2013	(µg/m <sup>3</sup> )	57	23	8	17	0.14	0.12	0.2
18.10.2013	(µg/m <sup>3</sup> )	61	26	5	15	N.D.	N.D.	N.D.
21.10.2013	(µg/m <sup>3</sup> )	73	30	7	12	0.23	0.19	0.25
25.10.2013	(µg/m <sup>3</sup> )	63	28	4	17	0.19	N.D.	0.23
28.10.2013	(µg/m <sup>3</sup> )	65	26	6	28	0.21	0.13	0.24

#### (D) LOCATION: THERMIC FLUID BOILER AREA

Date	Unit	PM <sub>10</sub>	PM <sub>2.5</sub>	SO <sub>2</sub>	NO <sub>2</sub>	Benzene	Toluene	Xylene
04.10.2013	(µg/m <sup>3</sup> )	75	29	6	18	0.26	0.15	0.37
07.10.2013	(µg/m <sup>3</sup> )	67	29	9	25	0.22	N.D.	0.14
10.10.2013	(µg/m <sup>3</sup> )	59	24	8	21	N.D.	N.D.	N.D.
14.10.2013	(µg/m <sup>3</sup> )	65	27	5	24	0.18	0.16	0.25
18.10.2013	(µg/m <sup>3</sup> )	69	30	6	28	N.D.	N.D.	N.D.
21.10.2013	(µg/m <sup>3</sup> )	55	24	8	21	N.D.	N.D.	N.D.
25.10.2013	(µg/m <sup>3</sup> )	60	27	7	18	0.16	N.D.	0.26
28.10.2013	(µg/m <sup>3</sup> )	68	28	5	26	0.16	0.15	0.24

N.D. : Not detected

# Envirofotech East Pvt. Limited

An ISO 9001:2008, 14001:2004 & OHSAS:18001:2007 Company

Laboratory Recognised by Ministry of Environment & Forests, Govt. of India

Bengal Ambuja Commercial Complex,

UN-F 13, 1050/1, Survey Park, Kolkata – 700 075

☎ – 2418 8127/8128/8601; Fax – 2418 8128; email: [eeplkol@gmail.com](mailto:eeplkol@gmail.com)

## Annexure – II

MONTH: NOVEMBER, 2013

(A) LOCATION: RESIN RAW STORAGE AREA								
Date	Unit	PM <sub>10</sub>	PM <sub>2.5</sub>	SO <sub>2</sub>	NO <sub>2</sub>	Benzene	Toluene	Xylene
01.11.2013	(µg/m <sup>3</sup> )	92	40	5	22	0.34	0.27	0.41
05.11.2013	(µg/m <sup>3</sup> )	86	38	10	27	0.32	0.22	0.42
08.11.2013	(µg/m <sup>3</sup> )	70	29	8	31	0.18	N.D.	0.32
11.11.2013	(µg/m <sup>3</sup> )	80	34	10	26	0.26	0.18	0.21
15.11.2013	(µg/m <sup>3</sup> )	104	43	12	20	0.18	0.24	0.29
18.11.2013	(µg/m <sup>3</sup> )	77	32	6	24	0.18	N.D.	0.23
22.11.2013	(µg/m <sup>3</sup> )	85	37	9	21	0.19	0.16	0.31
25.11.2013	(µg/m <sup>3</sup> )	62	28	6	18	N.D.	N.D.	N.D.
(B) LOCATION: RESIN GROUND FLOOR (BLENDER AREA)								
Date	Unit	PM <sub>10</sub>	PM <sub>2.5</sub>	SO <sub>2</sub>	NO <sub>2</sub>	Benzene	Toluene	Xylene
01.11.2013	(µg/m <sup>3</sup> )	80	35	15	19	0.14	0.11	0.17
05.11.2013	(µg/m <sup>3</sup> )	74	33	11	34	N.D.	N.D.	N.D.
08.11.2013	(µg/m <sup>3</sup> )	92	42	14	17	0.25	0.19	0.39
11.11.2013	(µg/m <sup>3</sup> )	76	33	10	21	N.D.	N.D.	N.D.
15.11.2013	(µg/m <sup>3</sup> )	83	36	6	30	0.17	0.14	0.29
18.11.2013	(µg/m <sup>3</sup> )	107	49	7	24	0.32	0.22	0.46
22.11.2013	(µg/m <sup>3</sup> )	80	36	10	29	N.D.	N.D.	N.D.
25.11.2013	(µg/m <sup>3</sup> )	85	34	13	17	0.25	0.17	0.26
(C) LOCATION: FIRST FLOOR OF RESIN PLANT (REACTOR AREA)								
Date	Unit	PM <sub>10</sub>	PM <sub>2.5</sub>	SO <sub>2</sub>	NO <sub>2</sub>	Benzene	Toluene	Xylene
03.11.2013	(µg/m <sup>3</sup> )	72	30	6	23	0.14	N.D.	N.D.

For ENVIROTECH EAST (P) LIMITED

## Envirofotech East Pvt. Limited

An ISO 9001:2008, 14001:2004 & OHSAS:18001:2007 Company

Laboratory Recognised by Ministry of Environment & Forests, Govt. of India

Bengal Ambuja Commercial Complex,

UN-F 13, 1050/1, Survey Park, Kolkata – 700 075

☎ – 2418 8127/8128/8601; Fax – 2418 8128; email: [eeplkol@gmail.com](mailto:eeplkol@gmail.com)

### Annexure – II

06.11.2013	( $\mu\text{g}/\text{m}^3$ )	86	34	11	14	N.D.	N.D.	N.D.
10.11.2013	( $\mu\text{g}/\text{m}^3$ )	80	34	6	17	0.15	0.16	0.18
13.11.2013	( $\mu\text{g}/\text{m}^3$ )	76	31	9	27	N.D.	N.D.	N.D.
17.11.2013	( $\mu\text{g}/\text{m}^3$ )	89	40	10	32	0.19	0.12	0.18
20.11.2013	( $\mu\text{g}/\text{m}^3$ )	74	33	8	25	0.16	0.12	0.18
24.11.2013	( $\mu\text{g}/\text{m}^3$ )	79	34	5	17	N.D.	N.D.	N.D.
27.11.2013	( $\mu\text{g}/\text{m}^3$ )	96	43	11	22	0.21	0.14	0.16
<b>(D) LOCATION: THERMIC FLUID BOILER AREA</b>								
<b>Date</b>	<b>Unit</b>	<b>PM<sub>10</sub></b>	<b>PM<sub>2.5</sub></b>	<b>SO<sub>2</sub></b>	<b>NO<sub>2</sub></b>	<b>Benzene</b>	<b>Toluene</b>	<b>Xylene</b>
03.11.2013	( $\mu\text{g}/\text{m}^3$ )	85	37	15	43	0.17	0.15	0.18
06.11.2013	( $\mu\text{g}/\text{m}^3$ )	78	29	12	38	N.D.	N.D.	N.D.
10.11.2013	( $\mu\text{g}/\text{m}^3$ )	93	37	17	34	0.26	0.22	0.36
13.11.2013	( $\mu\text{g}/\text{m}^3$ )	103	47	11	46	N.D.	N.D.	N.D.
17.11.2013	( $\mu\text{g}/\text{m}^3$ )	95	39	13	30	0.22	0.21	0.33
20.11.2013	( $\mu\text{g}/\text{m}^3$ )	89	39	16	40	0.21	0.16	0.19
24.11.2013	( $\mu\text{g}/\text{m}^3$ )	78	34	14	44	N.D.	N.D.	N.D.
27.11.2013	( $\mu\text{g}/\text{m}^3$ )	99	46	12	26	0.26	0.23	0.34

N.D. : Not detected

For ENVIROTECH EAST (P) LIMITED

# Envirofotech East Pvt. Limited

An ISO 9001:2008, 14001:2004 & OHSAS:18001:2007 Company

Laboratory Recognised by Ministry of Environment & Forests, Govt. of India

Bengal Ambuja Commercial Complex,

UN-F 13, 1050/1, Survey Park, Kolkata – 700 075

☎ – 2418 8127/8128/8601; Fax – 2418 8128; email: [eeplkol@gmail.com](mailto:eeplkol@gmail.com)

**Annexure – II**

MONTH: DECEMBER, 2013

<b>(A) LOCATION: RESIN RAW STORAGE AREA</b>								
Date	Unit	PM <sub>10</sub>	PM <sub>2.5</sub>	SO <sub>2</sub>	NO <sub>2</sub>	Benzene	Toluene	Xylene
01.12.2013	(µg/m <sup>3</sup> )	87	37	11	30	0.13	0.13	0.18
05.12.2013	(µg/m <sup>3</sup> )	93	36	13	20	0.14	0.12	0.26
08.12.2013	(µg/m <sup>3</sup> )	103	46	9	26	0.31	0.31	0.45
11.12.2013	(µg/m <sup>3</sup> )	89	39	12	33	0.22	0.13	0.25
15.12.2013	(µg/m <sup>3</sup> )	82	34	10	19	N.D.	N.D.	N.D.
19.12.2013	(µg/m <sup>3</sup> )	96	42	13	25	0.16	0.21	0.23
22.12.2013	(µg/m <sup>3</sup> )	87	37	9	29	0.19	0.13	0.28
26.12.2013	(µg/m <sup>3</sup> )	97	44	11	21	0.24	0.26	0.39
<b>(B) LOCATION: RESIN GROUND FLOOR (BLENDER AREA)</b>								
Date	Unit	PM <sub>10</sub>	PM <sub>2.5</sub>	SO <sub>2</sub>	NO <sub>2</sub>	Benzene	Toluene	Xylene
01.12.2013	(µg/m <sup>3</sup> )	80	34	16	22	0.13	0.14	0.24
05.12.2013	(µg/m <sup>3</sup> )	85	37	12	29	0.18	0.13	0.27
08.12.2013	(µg/m <sup>3</sup> )	79	32	10	21	N.D.	N.D.	N.D.
11.12.2013	(µg/m <sup>3</sup> )	97	44	8	30	0.32	0.24	0.36
15.12.2013	(µg/m <sup>3</sup> )	103	45	12	27	0.29	0.28	0.4
19.12.2013	(µg/m <sup>3</sup> )	79	34	9	37	N.D.	N.D.	N.D.
22.12.2013	(µg/m <sup>3</sup> )	91	41	11	26	0.28	0.19	0.31
26.12.2013	(µg/m <sup>3</sup> )	80	34	8	33	0.14	N.D.	0.21
<b>(C) LOCATION: FIRST FLOOR OF RESIN PLANT (REACTOR AREA)</b>								
Date	Unit	PM <sub>10</sub>	PM <sub>2.5</sub>	SO <sub>2</sub>	NO <sub>2</sub>	Benzene	Toluene	Xylene
03.12.2013	(µg/m <sup>3</sup> )	81	36	9	26	0.14	N.D.	N.D.

For ENVIROTECH EAST (P) LIMITED

## Envirofotech East Pvt. Limited

An ISO 9001:2008, 14001:2004 & OHSAS:18001:2007 Company

Laboratory Recognised by Ministry of Environment & Forests, Govt. of India

Bengal Ambuja Commercial Complex,

UN-F 13, 1050/1, Survey Park, Kolkata – 700 075

☎ – 2418 8127/8128/8601; Fax – 2418 8128; email: [eeplkol@gmail.com](mailto:eeplkol@gmail.com)

### Annexure – II

06.12.2013	( $\mu\text{g}/\text{m}^3$ )	90	41	11	34	0.27	0.19	0.26
10.12.2013	( $\mu\text{g}/\text{m}^3$ )	93	42	10	27	0.29	0.16	0.36
13.12.2013	( $\mu\text{g}/\text{m}^3$ )	83	35	7	25	0.14	0.12	0.19
18.12.2013	( $\mu\text{g}/\text{m}^3$ )	86	37	14	28	0.24	0.17	0.32
22.12.2013	( $\mu\text{g}/\text{m}^3$ )	82	36	8	20	N.D.	N.D.	N.D.
25.12.2013	( $\mu\text{g}/\text{m}^3$ )	78	35	11	23	N.D.	N.D.	N.D.
29.12.2013	( $\mu\text{g}/\text{m}^3$ )	90	39	13	27	0.26	0.21	0.38
<b>(D) LOCATION: THERMIC FLUID BOILER AREA</b>								
<b>Date</b>	<b>Unit</b>	<b>PM<sub>10</sub></b>	<b>PM<sub>2.5</sub></b>	<b>SO<sub>2</sub></b>	<b>NO<sub>2</sub></b>	<b>Benzene</b>	<b>Toluene</b>	<b>Xylene</b>
03.12.2013	( $\mu\text{g}/\text{m}^3$ )	95	43	12	35	0.22	0.21	0.29
06.12.2013	( $\mu\text{g}/\text{m}^3$ )	89	40	21	48	0.15	0.15	0.18
10.12.2013	( $\mu\text{g}/\text{m}^3$ )	106	46	14	39	0.31	0.22	0.34
13.12.2013	( $\mu\text{g}/\text{m}^3$ )	91	38	16	42	0.13	0.15	0.16
18.12.2013	( $\mu\text{g}/\text{m}^3$ )	80	31	13	50	N.D.	N.D.	N.D.
22.12.2013	( $\mu\text{g}/\text{m}^3$ )	103	45	17	45	0.32	0.24	0.36
25.12.2013	( $\mu\text{g}/\text{m}^3$ )	94	44	12	37	0.22	0.19	0.28
29.12.2013	( $\mu\text{g}/\text{m}^3$ )	101	46	13	46	0.32	0.18	0.26

N.D. : Not detected

# Envirofotech East Pvt. Limited

An ISO 9001:2008, 14001:2004 & OHSAS:18001:2007 Company

Laboratory Recognised by Ministry of Environment & Forests, Govt. of India

Bengal Ambuja Commercial Complex,

UN-F 13, 1050/1, Survey Park, Kolkata – 700 075

☎ – 2418 8127/8128/8601; Fax – 2418 8128; email: [eeplkol@gmail.com](mailto:eeplkol@gmail.com)

**Annexure – II**

MONTH: JANUARY, 2014

<b>(A) LOCATION: RESIN RAW STORAGE AREA</b>								
Date	Unit	PM <sub>10</sub>	PM <sub>2.5</sub>	SO <sub>2</sub>	NO <sub>2</sub>	Benzene	Toluene	Xylene
01.01.2014	(µg/m <sup>3</sup> )	78	34	17	35	0.28	0.21	0.33
06.01.2014	(µg/m <sup>3</sup> )	74	30	14	44	N.D.	N.D.	N.D.
09.01.2014	(µg/m <sup>3</sup> )	107	46	18	53	0.34	0.27	0.46
13.01.2014	(µg/m <sup>3</sup> )	82	35	16	43	0.16	0.14	0.18
16.01.2014	(µg/m <sup>3</sup> )	102	45	13	39	0.25	0.25	0.36
20.01.2014	(µg/m <sup>3</sup> )	72	30	10	46	0.13	0.12	0.16
24.01.2014	(µg/m <sup>3</sup> )	88	40	16	36	0.24	0.15	0.16
27.01.2014	(µg/m <sup>3</sup> )	113	51	12	43	0.31	0.27	0.43
<b>(B) LOCATION: RESIN GROUND FLOOR (BLENDER AREA)</b>								
Date	Unit	PM <sub>10</sub>	PM <sub>2.5</sub>	SO <sub>2</sub>	NO <sub>2</sub>	Benzene	Toluene	Xylene
01.01.2014	(µg/m <sup>3</sup> )	103	46	16	50	0.26	0.19	0.44
06.01.2014	(µg/m <sup>3</sup> )	76	32	13	43	N.D.	N.D.	N.D.
09.01.2014	(µg/m <sup>3</sup> )	89	39	11	56	0.17	0.14	0.23
13.01.2014	(µg/m <sup>3</sup> )	114	51	15	45	0.18	0.24	0.27
16.01.2014	(µg/m <sup>3</sup> )	78	33	22	32	0.15	N.D.	N.D.
20.01.2014	(µg/m <sup>3</sup> )	94	42	17	36	0.22	0.16	0.34
24.01.2014	(µg/m <sup>3</sup> )	120	53	15	48	0.38	0.26	0.42
27.01.2014	(µg/m <sup>3</sup> )	90	39	12	40	0.18	0.17	0.36
<b>(C) LOCATION: FIRST FLOOR OF RESIN PLANT (REACTOR AREA)</b>								
Date	Unit	PM <sub>10</sub>	PM <sub>2.5</sub>	SO <sub>2</sub>	NO <sub>2</sub>	Benzene	Toluene	Xylene
01.01.2014	(µg/m <sup>3</sup> )	87	36	14	44	0.23	0.14	0.35

For ENVIROTECH EAST (P) LIMITED

## Envirofotech East Pvt. Limited

An ISO 9001:2008, 14001:2004 & OHSAS:18001:2007 Company

Laboratory Recognised by Ministry of Environment & Forests, Govt. of India

Bengal Ambuja Commercial Complex,

UN-F 13, 1050/1, Survey Park, Kolkata – 700 075

☎ – 2418 8127/8128/8601; Fax – 2418 8128; email: [eeplkol@gmail.com](mailto:eeplkol@gmail.com)

### Annexure – II

06.01.2014	( $\mu\text{g}/\text{m}^3$ )	95	42	17	30	0.26	0.17	0.36
09.01.2014	( $\mu\text{g}/\text{m}^3$ )	80	34	10	37	0.14	N.D.	N.D.
13.01.2014	( $\mu\text{g}/\text{m}^3$ )	108	50	14	48	0.32	0.16	0.28
16.01.2014	( $\mu\text{g}/\text{m}^3$ )	91	41	12	36	0.2	0.11	0.32
20.01.2014	( $\mu\text{g}/\text{m}^3$ )	88	40	15	27	0.18	N.D.	0.18
24.01.2014	( $\mu\text{g}/\text{m}^3$ )	94	40	13	28	0.22	0.13	0.19
27.01.2014	( $\mu\text{g}/\text{m}^3$ )	111	47	16	31	0.36	0.24	0.31
<b>(D) LOCATION: THERMIC FLUID BOILER AREA</b>								
<b>Date</b>	<b>Unit</b>	<b>PM<sub>10</sub></b>	<b>PM<sub>2.5</sub></b>	<b>SO<sub>2</sub></b>	<b>NO<sub>2</sub></b>	<b>Benzene</b>	<b>Toluene</b>	<b>Xylene</b>
01.01.2014	( $\mu\text{g}/\text{m}^3$ )	89	38	15	40	0.17	0.13	0.12
06.01.2014	( $\mu\text{g}/\text{m}^3$ )	92	40	10	34	0.24	0.12	0.16
09.01.2014	( $\mu\text{g}/\text{m}^3$ )	113	50	13	44	0.21	0.16	0.31
13.01.2014	( $\mu\text{g}/\text{m}^3$ )	89	38	9	39	0.19	N.D.	0.26
16.01.2014	( $\mu\text{g}/\text{m}^3$ )	78	36	13	46	N.D.	N.D.	N.D.
20.01.2014	( $\mu\text{g}/\text{m}^3$ )	97	40	12	51	0.17	0.1	0.29
24.01.2014	( $\mu\text{g}/\text{m}^3$ )	88	39	15	43	N.D.	N.D.	N.D.
27.01.2014	( $\mu\text{g}/\text{m}^3$ )	93	36	11	35	0.16	0.15	0.18

N.D. : Not detected



# Envirofotech East Pvt. Limited

An ISO 9001:2008, 14001:2004 & OHSAS:18001:2007 Company

Laboratory Recognised by Ministry of Environment & Forests, Govt. of India

Bengal Ambuja Commercial Complex,

UN-F 13, 1050/1, Survey Park, Kolkata – 700 075

☎ – 2418 8127/8128/8601; Fax – 2418 8128; email: [eeplkol@gmail.com](mailto:eeplkol@gmail.com)

## Annexure – II

MONTH: FEBRUARY, 2014

(A) LOCATION: RESIN RAW STORAGE AREA								
Date	Unit	PM <sub>10</sub>	PM <sub>2.5</sub>	SO <sub>2</sub>	NO <sub>2</sub>	Benzene	Toluene	Xylene
03.02.2014	(µg/m <sup>3</sup> )	92	39	15	38	0.32	0.25	0.49
06.02.2014	(µg/m <sup>3</sup> )	87	34	11	42	0.16	0.16	0.18
10.02.2014	(µg/m <sup>3</sup> )	76	30	8	37	0.14	N.D.	N.D.
13.02.2014	(µg/m <sup>3</sup> )	83	35	10	46	0.16	0.14	0.28
17.02.2014	(µg/m <sup>3</sup> )	93	38	13	41	0.24	0.27	0.31
20.02.2014	(µg/m <sup>3</sup> )	79	34	11	32	N.D.	N.D.	N.D.
24.02.2014	(µg/m <sup>3</sup> )	76	32	9	35	N.D.	N.D.	N.D.
27.02.2014	(µg/m <sup>3</sup> )	67	27	7	30	N.D.	N.D.	N.D.
(B) LOCATION: RESIN GROUND FLOOR (BLENDER AREA)								
Date	Unit	PM <sub>10</sub>	PM <sub>2.5</sub>	SO <sub>2</sub>	NO <sub>2</sub>	Benzene	Toluene	Xylene
03.02.2014	(µg/m <sup>3</sup> )	82	33	10	37	0.21	0.14	0.16
06.02.2014	(µg/m <sup>3</sup> )	111	47	9	43	0.36	0.28	0.33
10.02.2014	(µg/m <sup>3</sup> )	94	39	11	32	0.24	0.15	0.16
13.02.2014	(µg/m <sup>3</sup> )	83	34	13	47	0.26	0.16	0.34
17.02.2014	(µg/m <sup>3</sup> )	110	46	15	39	0.14	0.21	0.26
20.02.2014	(µg/m <sup>3</sup> )	93	38	12	35	0.21	0.15	0.16
24.02.2014	(µg/m <sup>3</sup> )	77	33	14	28	N.D.	N.D.	N.D.
27.02.2014	(µg/m <sup>3</sup> )	80	34	10	39	0.22	0.16	0.16
(C) LOCATION: FIRST FLOOR OF RESIN PLANT (REACTOR AREA)								
Date	Unit	PM <sub>10</sub>	PM <sub>2.5</sub>	SO <sub>2</sub>	NO <sub>2</sub>	Benzene	Toluene	Xylene
03.02.2014	(µg/m <sup>3</sup> )	88	34	14	34	0.18	0.12	0.16

For ENVIROTECH EAST (P) LIMITED

## Envirofotech East Pvt. Limited

An ISO 9001:2008, 14001:2004 & OHSAS:18001:2007 Company

Laboratory Recognised by Ministry of Environment & Forests, Govt. of India

Bengal Ambuja Commercial Complex,

UN-F 13, 1050/1, Survey Park, Kolkata – 700 075

☎ – 2418 8127/8128/8601; Fax – 2418 8128; email: [eeplkol@gmail.com](mailto:eeplkol@gmail.com)

### Annexure – II

06.02.2014	( $\mu\text{g}/\text{m}^3$ )	79	35	11	30	N.D.	N.D.	N.D.
10.02.2014	( $\mu\text{g}/\text{m}^3$ )	82	39	13	39	0.15	N.D.	0.38
13.02.2014	( $\mu\text{g}/\text{m}^3$ )	103	47	14	28	0.29	0.21	0.28
17.02.2014	( $\mu\text{g}/\text{m}^3$ )	91	38	10	44	0.25	0.16	0.36
20.02.2014	( $\mu\text{g}/\text{m}^3$ )	89	39	9	29	0.22	0.11	0.31
24.02.2014	( $\mu\text{g}/\text{m}^3$ )	66	28	13	25	N.D.	N.D.	N.D.
27.02.2014	( $\mu\text{g}/\text{m}^3$ )	72	32	7	34	N.D.	N.D.	N.D.
<b>(D) LOCATION: THERMIC FLUID BOILER AREA</b>								
<b>Date</b>	<b>Unit</b>	<b>PM<sub>10</sub></b>	<b>PM<sub>2.5</sub></b>	<b>SO<sub>2</sub></b>	<b>NO<sub>2</sub></b>	<b>Benzene</b>	<b>Toluene</b>	<b>Xylene</b>
03.02.2014	( $\mu\text{g}/\text{m}^3$ )	82	31	16	47	0.19	0.12	0.13
06.02.2014	( $\mu\text{g}/\text{m}^3$ )	100	44	13	31	0.16	0.16	0.23
10.02.2014	( $\mu\text{g}/\text{m}^3$ )	87	35	8	38	0.25	0.15	0.39
13.02.2014	( $\mu\text{g}/\text{m}^3$ )	91	43	12	43	0.14	0.12	0.17
17.02.2014	( $\mu\text{g}/\text{m}^3$ )	80	34	9	40	N.D.	N.D.	N.D.
20.02.2014	( $\mu\text{g}/\text{m}^3$ )	69	32	13	38	N.D.	N.D.	N.D.
24.02.2014	( $\mu\text{g}/\text{m}^3$ )	87	33	11	30	0.22	0.14	0.18
27.02.2014	( $\mu\text{g}/\text{m}^3$ )	106	48	7	24	0.21	0.15	0.27

N.D. : Not detected

# Envirofotech East Pvt. Limited

An ISO 9001:2008, 14001:2004 & OHSAS:18001:2007 Company

Laboratory Recognised by Ministry of Environment & Forests, Govt. of India

Bengal Ambuja Commercial Complex,

UN-F 13, 1050/1, Survey Park, Kolkata – 700 075

☎ – 2418 8127/8128/8601; Fax – 2418 8128; email: [eeplkol@gmail.com](mailto:eeplkol@gmail.com)

**Annexure – II**

MONTH: MARCH, 2014

<b>(A) LOCATION: RESIN RAW STORAGE AREA</b>								
Date	Unit	PM <sub>10</sub>	PM <sub>2.5</sub>	SO <sub>2</sub>	NO <sub>2</sub>	Benzene	Toluene	Xylene
03.03.2014	(µg/m <sup>3</sup> )	82	35	13	34	0.28	0.16	0.19
06.03.2014	(µg/m <sup>3</sup> )	66	28	10	29	N.D.	N.D.	N.D.
10.03.2014	(µg/m <sup>3</sup> )	70	29	6	35	0.16	N.D.	0.14
13.03.2014	(µg/m <sup>3</sup> )	82	34	9	31	0.26	0.15	0.18
17.03.2014	(µg/m <sup>3</sup> )	98	42	12	38	0.32	0.22	0.25
20.03.2014	(µg/m <sup>3</sup> )	88	39	8	29	0.3	0.18	0.21
24.03.2014	(µg/m <sup>3</sup> )	79	31	13	22	0.12	N.D.	N.D.
27.03.2014	(µg/m <sup>3</sup> )	68	29	7	37	N.D.	N.D.	N.D.
<b>(B) LOCATION: RESIN GROUND FLOOR (BLENDER AREA)</b>								
Date	Unit	PM <sub>10</sub>	PM <sub>2.5</sub>	SO <sub>2</sub>	NO <sub>2</sub>	Benzene	Toluene	Xylene
03.03.2014	(µg/m <sup>3</sup> )	75	34	9	35	0.13	N.D.	N.D.
06.03.2014	(µg/m <sup>3</sup> )	84	36	11	40	0.27	0.17	0.39
10.03.2014	(µg/m <sup>3</sup> )	78	34	14	45	0.15	N.D.	0.16
13.03.2014	(µg/m <sup>3</sup> )	96	39	9	34	0.19	0.22	0.35
17.03.2014	(µg/m <sup>3</sup> )	108	43	11	42	0.16	0.26	0.32
20.03.2014	(µg/m <sup>3</sup> )	91	38	8	30	0.28	0.18	0.33
24.03.2014	(µg/m <sup>3</sup> )	82	35	12	25	0.16	0.14	0.16
27.03.2014	(µg/m <sup>3</sup> )	72	30	10	23	N.D.	N.D.	N.D.
<b>(C) LOCATION: FIRST FLOOR OF RESIN PLANT (REACTOR AREA)</b>								
Date	Unit	PM <sub>10</sub>	PM <sub>2.5</sub>	SO <sub>2</sub>	NO <sub>2</sub>	Benzene	Toluene	Xylene
03.03.2014	(µg/m <sup>3</sup> )	97	40	10	30	0.32	0.18	0.36

For ENVIROTECH EAST (P) LIMITED

## Envirofotech East Pvt. Limited

An ISO 9001:2008, 14001:2004 & OHSAS:18001:2007 Company

Laboratory Recognised by Ministry of Environment & Forests, Govt. of India

Bengal Ambuja Commercial Complex,

UN-F 13, 1050/1, Survey Park, Kolkata – 700 075

☎ – 2418 8127/8128/8601; Fax – 2418 8128; email: [eeplkol@gmail.com](mailto:eeplkol@gmail.com)

### Annexure – II

06.03.2014	( $\mu\text{g}/\text{m}^3$ )	106	46	8	39	0.34	0.25	0.29
10.03.2014	( $\mu\text{g}/\text{m}^3$ )	82	30	11	28	0.18	0.14	0.15
13.03.2014	( $\mu\text{g}/\text{m}^3$ )	74	30	13	40	N.D.	N.D.	N.D.
17.03.2014	( $\mu\text{g}/\text{m}^3$ )	62	29	8	29	N.D.	N.D.	N.D.
20.03.2014	( $\mu\text{g}/\text{m}^3$ )	77	32	7	39	0.21	0.11	0.18
24.03.2014	( $\mu\text{g}/\text{m}^3$ )	86	38	10	25	0.26	0.14	0.36
27.03.2014	( $\mu\text{g}/\text{m}^3$ )	68	29	8	30	N.D.	N.D.	N.D.
<b>(D) LOCATION: THERMIC FLUID BOILER AREA</b>								
<b>Date</b>	<b>Unit</b>	<b>PM<sub>10</sub></b>	<b>PM<sub>2.5</sub></b>	<b>SO<sub>2</sub></b>	<b>NO<sub>2</sub></b>	<b>Benzene</b>	<b>Toluene</b>	<b>Xylene</b>
03.03.2014	( $\mu\text{g}/\text{m}^3$ )	94	40	12	33	0.22	0.17	0.24
06.03.2014	( $\mu\text{g}/\text{m}^3$ )	76	35	6	32	N.D.	N.D.	N.D.
10.03.2014	( $\mu\text{g}/\text{m}^3$ )	89	35	9	28	0.16	0.11	0.28
13.03.2014	( $\mu\text{g}/\text{m}^3$ )	98	42	12	20	0.31	0.22	0.24
17.03.2014	( $\mu\text{g}/\text{m}^3$ )	81	30	8	26	0.13	N.D.	N.D.
20.03.2014	( $\mu\text{g}/\text{m}^3$ )	94	38	6	21	0.29	0.16	0.32
24.03.2014	( $\mu\text{g}/\text{m}^3$ )	70	29	10	38	N.D.	N.D.	N.D.
27.03.2014	( $\mu\text{g}/\text{m}^3$ )	79	34	7	28	0.21	0.16	0.18

N.D. : Not detected

# Envirofotech East Pvt. Limited

An ISO 9001:2008, 14001:2004 & OHSAS:18001:2007 Company

Laboratory Recognised by Ministry of Environment & Forests, Govt. of India

Bengal Ambuja Commercial Complex,

UN-F 13, 1050/1, Survey Park, Kolkata – 700 075

☎ – 2418 8127/8128/8601; Fax – 2418 8128; email: [eeplkol@gmail.com](mailto:eeplkol@gmail.com)

## Annexure – II

### STATISTICAL ANALYSIS OF POLLUTANTS

#### (A) (PERIOD: OCTOBER, 2013 TO DECEMBER, 2013)

Pollutants	Locations	Min	Max	A.M.	P - 98
PM <sub>10</sub> (µg/m <sup>3</sup> )	Resin Raw Storage Area	60	104	82.8	103.5
	Resin Ground Floor (Blender Area)	70	107	84.3	105.2
	First Floor of Resin Plant (Reactor Area)	57	96	77.7	94.6
	Thermic fluid Boiler Area	72	106	90.2	104.6
	<b>Overall</b>	<b>57</b>	<b>107</b>	<b>83.8</b>	<b>105.1</b>
PM <sub>2.5</sub> (µg/m <sup>3</sup> )	Resin Raw Storage Area	26	46	35.5	45.1
	Resin Ground Floor (Blender Area)	28	49	36.3	47.4
	First Floor of Resin Plant (Reactor Area)	23	43	33.3	42.6
	Thermic fluid Boiler Area	29	47	38.7	47.0
	<b>Overall</b>	<b>22.8</b>	<b>49.22</b>	<b>35.9</b>	<b>47.4</b>
SO <sub>2</sub> (µg/m <sup>3</sup> )	Resin Raw Storage Area	4	13	8.3	13.0
	Resin Ground Floor (Blender Area)	5	16	9.4	15.5
	First Floor of Resin Plant (Reactor Area)	4	14	8.0	13.5
	Thermic fluid Boiler Area	8	21	12.8	19.2
	<b>Overall</b>	<b>4</b>	<b>21</b>	<b>9.6</b>	<b>18.9</b>
NO <sub>2</sub> (µg/m <sup>3</sup> )	Resin Raw Storage Area	13	33	22.0	32.1
	Resin Ground Floor (Blender Area)	14	37	23.5	35.6
	First Floor of Resin Plant (Reactor Area)	12	34	22.0	33.1
	Thermic fluid Boiler Area	26	50	38.6	49.1
	<b>Overall</b>	<b>12</b>	<b>50</b>	<b>26.5</b>	<b>48.3</b>
Benzene (µg/m <sup>3</sup> )	Resin Raw Storage Area	0.13	0.34	0.21	0.33
	Resin Ground Floor (Blender Area)	0.13	0.36	0.24	0.35

For ENVIROTECH EAST (P) LIMITED

## Envirofotech East Pvt. Limited

An ISO 9001:2008, 14001:2004 & OHSAS:18001:2007 Company

Laboratory Recognised by Ministry of Environment & Forests, Govt. of India

Bengal Ambuja Commercial Complex,

UN-F 13, 1050/1, Survey Park, Kolkata – 700 075

☎ – 2418 8127/8128/8601; Fax – 2418 8128; email: [eeplkol@gmail.com](mailto:eeplkol@gmail.com)

### Annexure – II

	First Floor of Resin Plant (Reactor Area)	0.14	0.31	0.20	0.30
	Thermic fluid Boiler Area	0.13	0.32	0.22	0.32
	<b>Overall</b>	<b>0.13</b>	<b>0.14</b>	<b>0.13</b>	<b>0.14</b>
<b>Toluene</b> ( $\mu\text{g}/\text{m}^3$ )	Resin Raw Storage Area	0.12	0.31	0.19	0.30
	Resin Ground Floor (Blender Area)	0.11	0.28	0.17	0.27
	First Floor of Resin Plant (Reactor Area)	0.12	0.21	0.15	0.20
	Thermic fluid Boiler Area	0.15	0.24	0.18	0.24
	<b>Overall</b>	<b>0.11</b>	<b>0.15</b>	<b>0.13</b>	<b>0.15</b>
<b>Xylene</b> ( $\mu\text{g}/\text{m}^3$ )	Resin Raw Storage Area	0.18	0.45	0.30	0.44
	Resin Ground Floor (Blender Area)	0.17	0.46	0.29	0.44
	First Floor of Resin Plant (Reactor Area)	0.16	0.38	0.24	0.37
	Thermic fluid Boiler Area	0.14	0.37	0.27	0.37
	<b>Overall</b>	<b>0.14</b>	<b>0.18</b>	<b>0.16</b>	<b>0.18</b>
<b>(B) (PERIOD: JANUARY, 2014 TO MARCH, 2014)</b>					
<b>Pollutants</b>	<b>Locations</b>	<b>Min</b>	<b>Max</b>	<b>A.M.</b>	<b>P - 98</b>
<b>PM<sub>10</sub></b> ( $\mu\text{g}/\text{m}^3$ )	Resin Raw Storage Area	66	113	83.4	110.2
	Resin Ground Floor (Blender Area)	72	120	90.8	117.2
	First Floor of Resin Plant (Reactor Area)	62	111	86.5	109.6
	Thermic fluid Boiler Area	69	113	88.4	109.8
	<b>Overall</b>	<b>62</b>	<b>120</b>	<b>87.3</b>	<b>116.8</b>
<b>PM<sub>2.5</sub></b> ( $\mu\text{g}/\text{m}^3$ )	Resin Raw Storage Area	27	51	35.3	48.6
	Resin Ground Floor (Blender Area)	30	53	38.7	52.1
	First Floor of Resin Plant (Reactor Area)	28	50	37.3	48.6
	Thermic fluid Boiler Area	29	50	37.5	48.8
	<b>Overall</b>	<b>26.8</b>	<b>52.8</b>	<b>37.2</b>	<b>51.9</b>
<b>SO<sub>2</sub></b> ( $\mu\text{g}/\text{m}^3$ )	Resin Raw Storage Area	6	18	11.6	17.5
	Resin Ground Floor (Blender Area)	8	22	12.5	19.7
	First Floor of Resin Plant (Reactor Area)	7	17	11.5	16.5
	Thermic fluid Boiler Area	6	16	10.7	15.5
	<b>Overall</b>	<b>6</b>	<b>22</b>	<b>11.6</b>	<b>19.6</b>
<b>NO<sub>2</sub></b>	Resin Raw Storage Area	22	53	37.3	49.8

For ENVIROTECH EAST (P) LIMITED

## Envirofotech East Pvt. Limited

An ISO 9001:2008, 14001:2004 & OHSAS:18001:2007 Company

Laboratory Recognised by Ministry of Environment & Forests, Govt. of India

Bengal Ambuja Commercial Complex,

UN-F 13, 1050/1, Survey Park, Kolkata – 700 075

☎ – 2418 8127/8128/8601; Fax – 2418 8128; email: [eeplkol@gmail.com](mailto:eeplkol@gmail.com)

### Annexure – II

<b>(<math>\mu\text{g}/\text{m}^3</math>)</b>	Resin Ground Floor (Blender Area)	23	56	38.5	53.2
	First Floor of Resin Plant (Reactor Area)	25	48	33.5	46.2
	Thermic fluid Boiler Area	20	51	35.4	49.2
	<b>Overall</b>	<b>20</b>	<b>56</b>	<b>36.2</b>	<b>53.0</b>
<b>Benzene (<math>\mu\text{g}/\text{m}^3</math>)</b>	Resin Raw Storage Area	0.12	0.34	0.23	0.33
	Resin Ground Floor (Blender Area)	0.13	0.38	0.22	0.37
	First Floor of Resin Plant (Reactor Area)	0.14	0.36	0.24	0.35
	Thermic fluid Boiler Area	0.13	0.31	0.20	0.30
	<b>Overall</b>	<b>0.12</b>	<b>0.14</b>	<b>0.13</b>	<b>0.14</b>
<b>Toluene (<math>\mu\text{g}/\text{m}^3</math>)</b>	Resin Raw Storage Area	0.12	0.27	0.20	0.27
	Resin Ground Floor (Blender Area)	0.14	0.28	0.19	0.27
	First Floor of Resin Plant (Reactor Area)	0.11	0.25	0.16	0.25
	Thermic fluid Boiler Area	0.10	0.22	0.15	0.21
	<b>Overall</b>	<b>0.10</b>	<b>0.14</b>	<b>0.12</b>	<b>0.14</b>
<b>Xylene (<math>\mu\text{g}/\text{m}^3</math>)</b>	Resin Raw Storage Area	0.14	0.49	0.27	0.48
	Resin Ground Floor (Blender Area)	0.16	0.44	0.28	0.43
	First Floor of Resin Plant (Reactor Area)	0.15	0.38	0.28	0.37
	Thermic fluid Boiler Area	0.12	0.39	0.23	0.37
	<b>Overall</b>	<b>0.12</b>	<b>0.16</b>	<b>0.14</b>	<b>0.16</b>

N.B.: Min: Minimum, Max: Maximum, A.M.: Arithmetic mean, P-98: 98 percentile

# Envirotech East Pvt. Limited

An ISO 9001:2008, 14001:2004 & OHSAS:18001:2007 Company  
 Laboratory Recognised by Ministry of Environment & Forests, Govt. of India

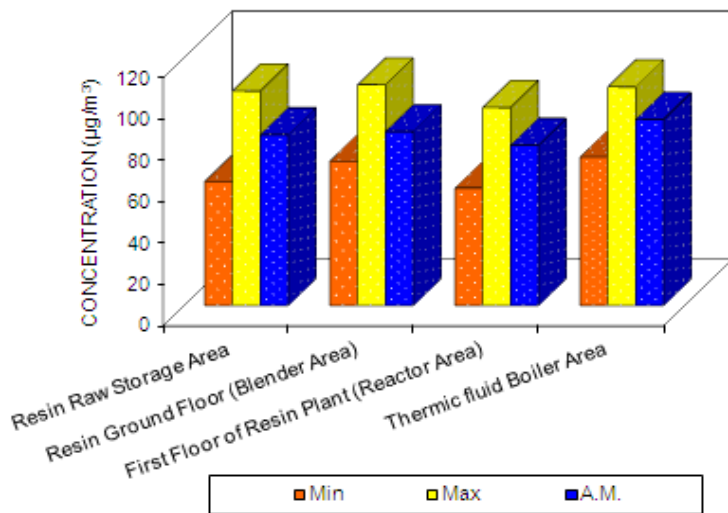
Bengal Ambuja Commercial Complex,  
 UN-F 13, 1050/1, Survey Park, Kolkata – 700 075

☎ – 2418 8127/8128/8601; Fax – 2418 8128; email: [eeplkol@gmail.com](mailto:eeplkol@gmail.com)

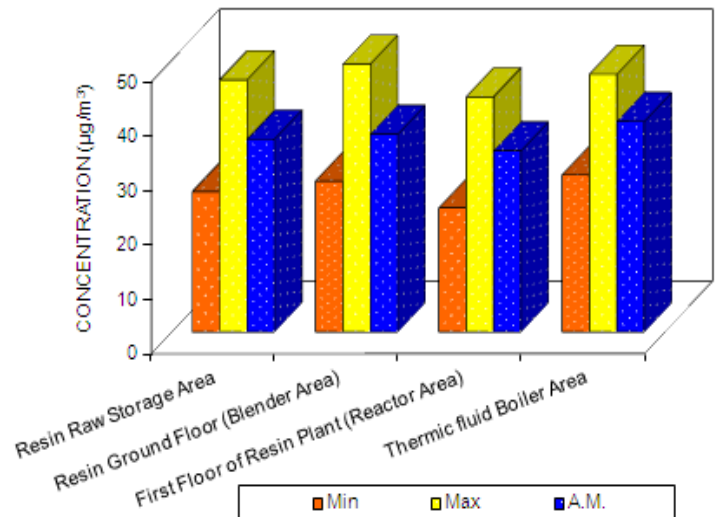
## Annexure – II

### GRAPHICAL PRESENTATION OF STATISTICAL ANALYSIS RESULTS

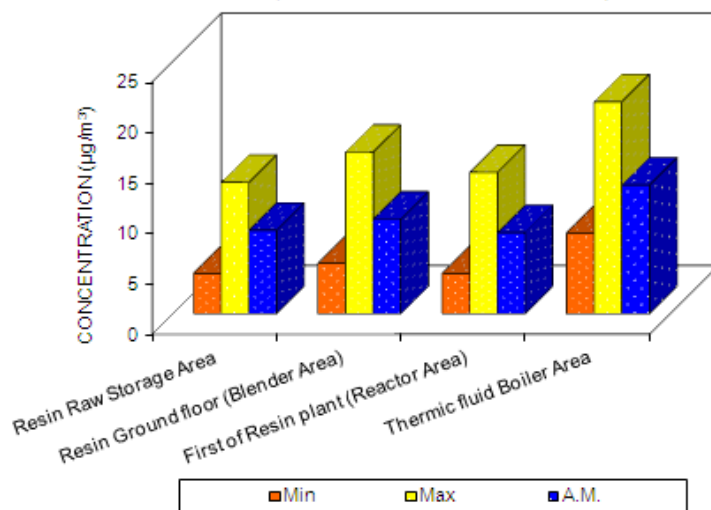
STATISTICAL ANALYSIS RESULTS OF PM<sub>10</sub>  
 (Period: OCT, 2013 - DEC, 2013)



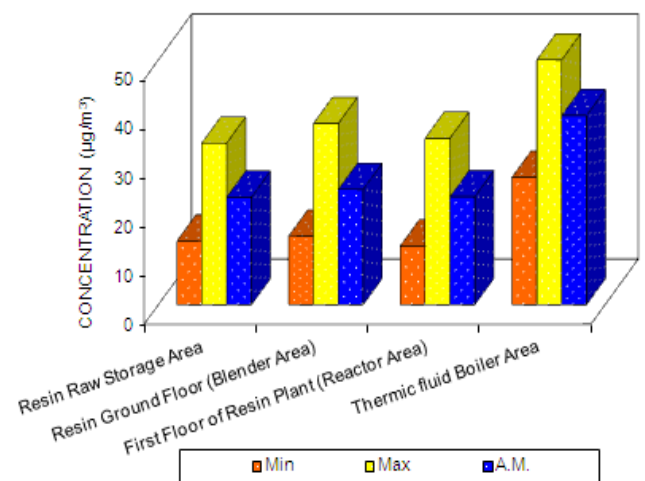
STATISTICAL ANALYSIS RESULTS OF PM<sub>2.5</sub>  
 (Period: OCT, 2010 - DEC, 2010)



STATISTICAL ANALYSIS RESULTS OF SO<sub>2</sub>  
 (Period: OCT, 2013 - DEC, 2013)



STATISTICAL ANALYSIS RESULTS OF NO<sub>2</sub>  
 (Period: OCT, 2013 - DEC, 2013)





# Envirotech East Pvt. Limited

An ISO 9001:2008, 14001:2004 & OHSAS:18001:2007 Company

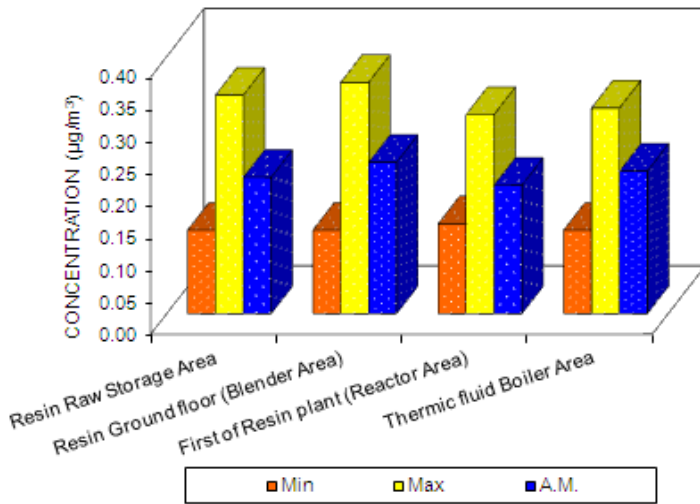
Laboratory Recognised by Ministry of Environment & Forests, Govt. of India

Bengal Ambuja Commercial Complex,  
UN-F 13, 1050/1, Survey Park, Kolkata – 700 075

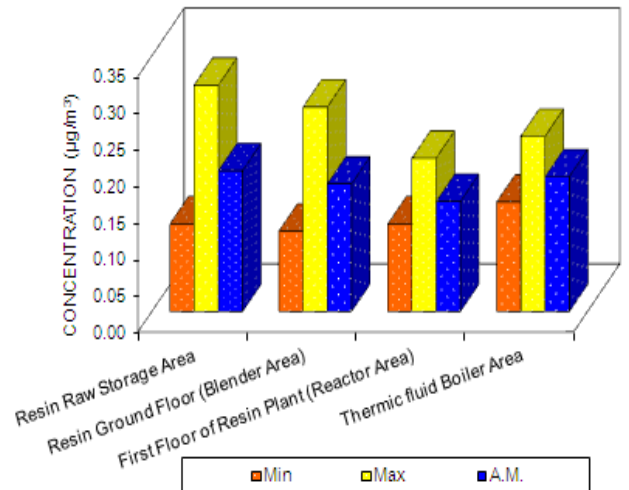
☎ – 2418 8127/8128/8601; Fax – 2418 8128; email: [eeplkol@gmail.com](mailto:eeplkol@gmail.com)

## Annexure – II

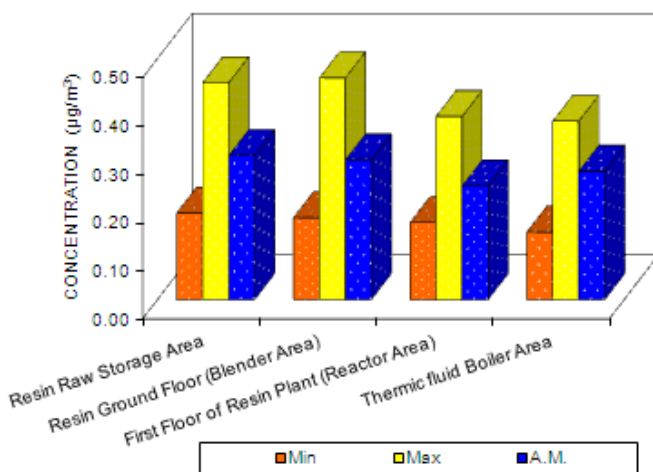
STATISTICAL ANALYSIS RESULTS OF BENZENE  
(Period: OCT, 2013 - DEC, 2013)



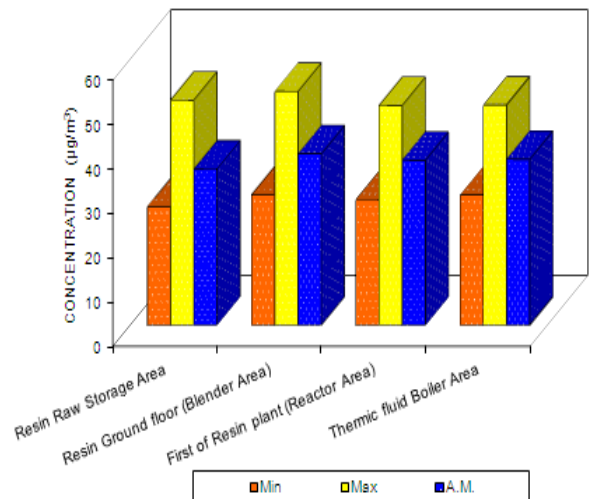
STATISTICAL ANALYSIS RESULTS OF TOLUENE  
(Period: OCT, 2013 - DEC, 2013)



STATISTICAL ANALYSIS RESULTS OF XYLENE  
(Period: OCT, 2013 - DEC, 2013)



STATISTICAL ANALYSIS RESULTS OF PM<sub>2.5</sub>  
(Period: JANUARY, 2014 TO MARCH, 2014)



# Envirotech East Pvt. Limited

An ISO 9001:2008, 14001:2004 & OHSAS:18001:2007 Company

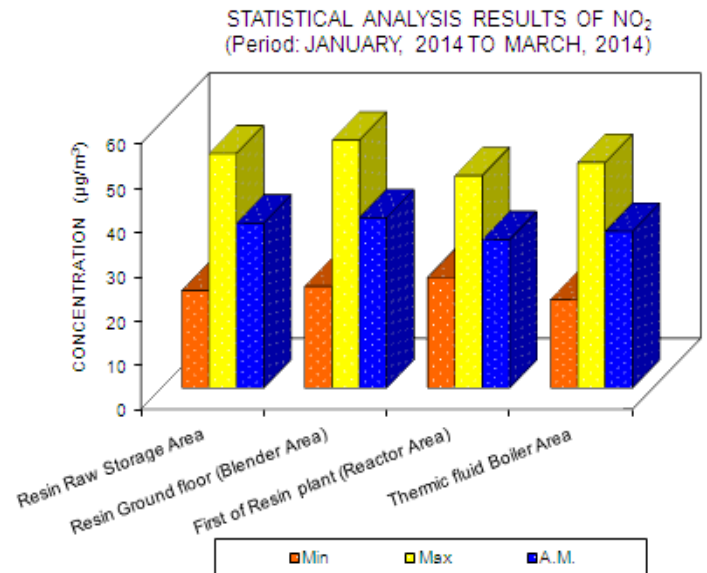
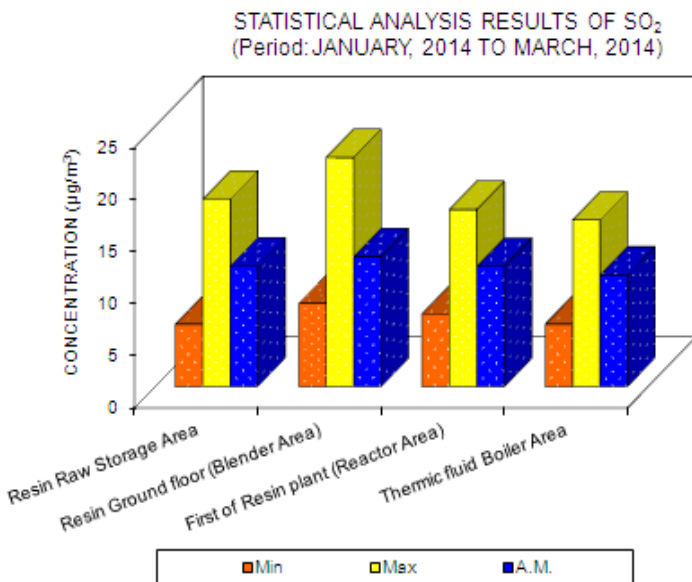
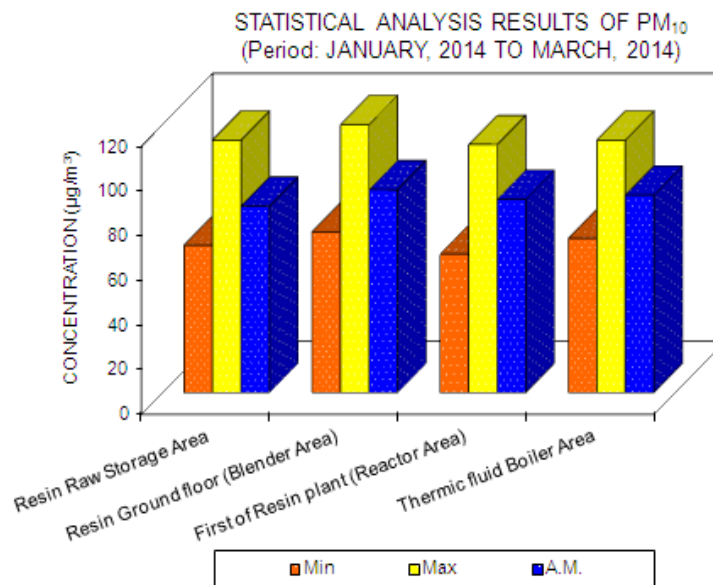
Laboratory Recognised by Ministry of Environment & Forests, Govt. of India

Bengal Ambuja Commercial Complex,

UN-F 13, 1050/1, Survey Park, Kolkata – 700 075

☎ – 2418 8127/8128/8601; Fax – 2418 8128; email: [eeplkol@gmail.com](mailto:eeplkol@gmail.com)

## Annexure – II



# Envirotech East Pvt. Limited

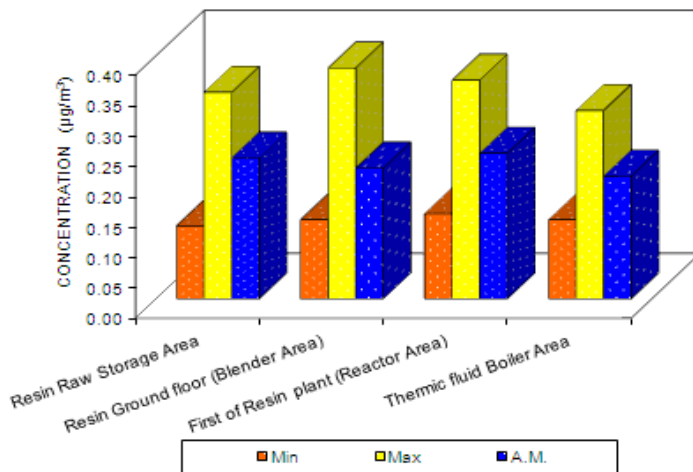
An ISO 9001:2008, 14001:2004 & OHSAS:18001:2007 Company  
 Laboratory Recognised by Ministry of Environment & Forests, Govt. of India

Bengal Ambuja Commercial Complex,  
 UN-F 13, 1050/1, Survey Park, Kolkata – 700 075

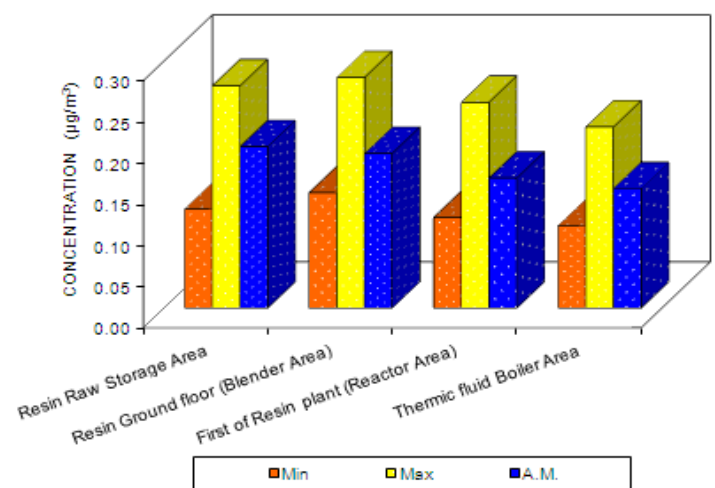
☎ – 2418 8127/8128/8601; Fax – 2418 8128; email: [eeplkol@gmail.com](mailto:eeplkol@gmail.com)

## Annexure – II

STATISTICAL ANALYSIS RESULTS OF BENZENE  
 (Period: JANUARY, 2014 TO MARCH, 2014)



STATISTICAL ANALYSIS RESULTS OF TOLUENE  
 (Period: JANUARY, 2014 TO MARCH, 2014)



STATISTICAL ANALYSIS RESULTS OF XYLENE  
 (Period: JANUARY, 2014 TO MARCH, 2014)

