

# Envirotech East Pvt. Limited

An ISO 9001:2008, 14001:2004 & OHSAS:18001:2007 Company

Laboratory Recognised by Ministry of Environment & Forests, Govt. of India

Bengal Ambuja Commercial Complex,

UN-F 13, 1050/1, Survey Park, Kolkata – 700 075

☎ – 2418 8127/8128/8601; Fax – 2418 8128; email: [eeplkol@gmail.com](mailto:eeplkol@gmail.com)

Annexure – II

## ONSITE FUGITIVE EMISSION MONITORING RESULTS (PERIOD: APRIL, 2014 TO SEPTEMBER, 2014)

MONTH: APRIL, 2014

(A) LOCATION: RESIN RAW STORAGE AREA								
Date	Unit	PM <sub>10</sub>	PM <sub>2.5</sub>	SO <sub>2</sub>	NO <sub>2</sub>	Benzene	Toluene	Xylene
01.04.2014	(µg/m <sup>3</sup> )	118	50	12	23	0.75	0.34	5.13
06.04.2014	(µg/m <sup>3</sup> )	96	40	9	26	1.32	1.47	4.14
09.04.2014	(µg/m <sup>3</sup> )	141	62	6	35	1.36	N.D.	3.22
13.04.2014	(µg/m <sup>3</sup> )	88	35	11	25	0.9	1.32	3.33
16.04.2014	(µg/m <sup>3</sup> )	102	44	8	34	0.92	N.D.	6.06
20.04.2014	(µg/m <sup>3</sup> )	87	36	7	24	0.65	0.82	2.44
24.04.2014	(µg/m <sup>3</sup> )	98	45	10	30	0.52	N.D.	N.D.
28.04.2014	(µg/m <sup>3</sup> )	139	63	7	26	1.26	0.76	2.18
(B) LOCATION: RESIN GROUND FLOOR (BLENDER AREA)								
Date	Unit	PM <sub>10</sub>	PM <sub>2.5</sub>	SO <sub>2</sub>	NO <sub>2</sub>	Benzene	Toluene	Xylene
01.04.2014	(µg/m <sup>3</sup> )	97	43	12	38	0.7	0.29	4.72
06.04.2014	(µg/m <sup>3</sup> )	88	37	9	31	1.72	1.42	3.92
09.04.2014	(µg/m <sup>3</sup> )	72	31	7	40	1.31	0.36	2.68
13.04.2014	(µg/m <sup>3</sup> )	93	40	11	33	0.85	1.27	3.27
16.04.2014	(µg/m <sup>3</sup> )	107	48	8	20	0.87	N.D.	4.24
20.04.2014	(µg/m <sup>3</sup> )	87	36	13	24	0.60	0.77	2.38
24.04.2014	(µg/m <sup>3</sup> )	102	44	10	36	0.47	0.44	0.82
28.04.2014	(µg/m <sup>3</sup> )	86	36	8	28	1.21	0.71	2.12

For ENVIROTECH EAST (P) LIMITED

## Envirofotech East Pvt. Limited

An ISO 9001:2008, 14001:2004 & OHSAS:18001:2007 Company

Laboratory Recognised by Ministry of Environment & Forests, Govt. of India

Bengal Ambuja Commercial Complex,

UN-F 13, 1050/1, Survey Park, Kolkata – 700 075

☎ – 2418 8127/8128/8601; Fax – 2418 8128; email: [eeplkol@gmail.com](mailto:eeplkol@gmail.com)

### Annexure – II

(C) LOCATION: FIRST FLOOR OF RESIN PLANT (REACTOR AREA)								
Date	Unit	PM <sub>10</sub>	PM <sub>2.5</sub>	SO <sub>2</sub>	NO <sub>2</sub>	Benzene	Toluene	Xylene
01.04.2014	(µg/m <sup>3</sup> )	104	47	10	35	0.61	0.2	4.63
06.04.2014	(µg/m <sup>3</sup> )	92	40	13	34	1.51	1.33	3.83
09.04.2014	(µg/m <sup>3</sup> )	89	40	6	28	1.22	0.27	2.59
13.04.2014	(µg/m <sup>3</sup> )	106	48	10	39	0.76	1.18	3.18
16.04.2014	(µg/m <sup>3</sup> )	86	37	8	27	0.78	N.D.	5.46
20.04.2014	(µg/m <sup>3</sup> )	97	43	11	18	0.51	0.68	2.29
24.04.2014	(µg/m <sup>3</sup> )	107	49	9	25	0.38	0.35	0.73
28.04.2014	(µg/m <sup>3</sup> )	99	43	12	22	1.54	0.62	2.03
(D) LOCATION: THERMIC FLUID BOILER AREA								
Date	Unit	PM <sub>10</sub>	PM <sub>2.5</sub>	SO <sub>2</sub>	NO <sub>2</sub>	Benzene	Toluene	Xylene
01.04.2014	(µg/m <sup>3</sup> )	116	51	16	30	0.58	0.17	2.27
06.04.2014	(µg/m <sup>3</sup> )	108	45	11	24	1.48	1.30	3.79
09.04.2014	(µg/m <sup>3</sup> )	87	36	18	34	1.19	0.24	2.55
13.04.2014	(µg/m <sup>3</sup> )	99	43	14	29	0.73	1.15	3.14
16.04.2014	(µg/m <sup>3</sup> )	104	47	10	36	0.75	N.D.	4.11
20.04.2014	(µg/m <sup>3</sup> )	115	51	13	22	0.48	0.65	2.25
24.04.2014	(µg/m <sup>3</sup> )	97	42	16	33	0.35	0.32	0.69
28.04.2014	(µg/m <sup>3</sup> )	83	35	12	25	1.51	0.59	1.99

N.D. : Not detected

## Envirotech East Pvt. Limited

An ISO 9001:2008, 14001:2004 & OHSAS:18001:2007 Company

Laboratory Recognised by Ministry of Environment & Forests, Govt. of India

Bengal Ambuja Commercial Complex,

UN-F 13, 1050/1, Survey Park, Kolkata – 700 075

☎ – 2418 8127/8128/8601; Fax – 2418 8128; email: [eeplkol@gmail.com](mailto:eeplkol@gmail.com)

Annexure – II

MONTH: MAY, 2014

(A) LOCATION: RESIN RAW STORAGE AREA								
Date	Unit	PM <sub>10</sub>	PM <sub>2.5</sub>	SO <sub>2</sub>	NO <sub>2</sub>	Benzene	Toluene	Xylene
05.05.2014	(µg/m <sup>3</sup> )	80	33	10	29	0.86	N.D.	2.46
08.05.2014	(µg/m <sup>3</sup> )	115	51	14	19	0.52	0.56	1.86
15.05.2014	(µg/m <sup>3</sup> )	107	45	11	28	0.76	N.D.	2.52
15.05.2014	(µg/m <sup>3</sup> )	97	42	13	37	1.02	0.95	2.98
19.05.2014	(µg/m <sup>3</sup> )	120	55	11	28	0.92	0.65	4.06
22.05.2014	(µg/m <sup>3</sup> )	89	37	14	23	0.65	N.D.	2.44
26.05.2014	(µg/m <sup>3</sup> )	104	47	12	17	0.52	N.D.	N.D.
29.05.2014	(µg/m <sup>3</sup> )	95	41	10	21	N.D.	N.D.	1.47
(B) LOCATION: RESIN GROUND FLOOR (BLENDER AREA)								
Date	Unit	PM <sub>10</sub>	PM <sub>2.5</sub>	SO <sub>2</sub>	NO <sub>2</sub>	Benzene	Toluene	Xylene
05.05.2014	(µg/m <sup>3</sup> )	104	43	14	25	0.81	N.D.	2.4
08.05.2014	(µg/m <sup>3</sup> )	89	39	9	31	0.47	0.51	1.8
15.05.2014	(µg/m <sup>3</sup> )	116	52	8	20	0.71	N.D.	2.46
15.05.2014	(µg/m <sup>3</sup> )	86	37	11	35	0.97	0.9	2.92
19.05.2014	(µg/m <sup>3</sup> )	90	41	8	27	0.87	0.6	4.12
22.05.2014	(µg/m <sup>3</sup> )	115	51	10	23	0.6	N.D.	2.38
26.05.2014	(µg/m <sup>3</sup> )	99	45	12	30	0.47	N.D.	0.62
29.05.2014	(µg/m <sup>3</sup> )	87	37	8	27	N.D.	N.D.	1.41

## Envirofotech East Pvt. Limited

An ISO 9001:2008, 14001:2004 & OHSAS:18001:2007 Company

Laboratory Recognised by Ministry of Environment & Forests, Govt. of India

Bengal Ambuja Commercial Complex,

UN-F 13, 1050/1, Survey Park, Kolkata – 700 075

☎ – 2418 8127/8128/8601; Fax – 2418 8128; email: [eeplkol@gmail.com](mailto:eeplkol@gmail.com)

### Annexure – II

(C) LOCATION: FIRST FLOOR OF RESIN PLANT (REACTOR AREA)								
Date	Unit	PM <sub>10</sub>	PM <sub>2.5</sub>	SO <sub>2</sub>	NO <sub>2</sub>	Benzene	Toluene	Xylene
05.05.2014	(µg/m <sup>3</sup> )	96	40	11	25	0.72	N.D.	2.31
08.05.2014	(µg/m <sup>3</sup> )	113	51	8	21	0.38	0.42	1.71
15.05.2014	(µg/m <sup>3</sup> )	90	41	10	30	0.62	N.D.	2.37
15.05.2014	(µg/m <sup>3</sup> )	111	48	12	19	0.88	0.81	2.83
19.05.2014	(µg/m <sup>3</sup> )	99	42	7	30	0.78	0.51	4.03
22.05.2014	(µg/m <sup>3</sup> )	108	48	6	20	0.51	N.D.	2.29
26.05.2014	(µg/m <sup>3</sup> )	74	32	10	16	0.38	N.D.	0.53
29.05.2014	(µg/m <sup>3</sup> )	80	34	8	25	N.D.	N.D.	1.32
(D) LOCATION: THERMIC FLUID BOILER AREA								
Date	Unit	PM <sub>10</sub>	PM <sub>2.5</sub>	SO <sub>2</sub>	NO <sub>2</sub>	Benzene	Toluene	Xylene
05.05.2014	(µg/m <sup>3</sup> )	77	32	12	36	0.69	N.D.	4.92
08.05.2014	(µg/m <sup>3</sup> )	85	37	9	20	0.35	0.39	1.67
15.05.2014	(µg/m <sup>3</sup> )	101	45	7	27	0.59	N.D.	2.33
15.05.2014	(µg/m <sup>3</sup> )	105	45	8	32	0.85	0.78	2.79
19.05.2014	(µg/m <sup>3</sup> )	94	43	14	29	0.75	0.48	3.99
22.05.2014	(µg/m <sup>3</sup> )	83	37	9	27	0.48	N.D.	2.25
26.05.2014	(µg/m <sup>3</sup> )	101	45	7	19	0.35	N.D.	0.49
29.05.2014	(µg/m <sup>3</sup> )	96	41	10	13	N.D.	N.D.	1.28

N.D. : Not detected

## Envirotech East Pvt. Limited

An ISO 9001:2008, 14001:2004 & OHSAS:18001:2007 Company

Laboratory Recognised by Ministry of Environment & Forests, Govt. of India

Bengal Ambuja Commercial Complex,

UN-F 13, 1050/1, Survey Park, Kolkata – 700 075

☎ – 2418 8127/8128/8601; Fax – 2418 8128; email: [eeplkol@gmail.com](mailto:eeplkol@gmail.com)

### Annexure – II

MONTH: JUNE, 2014

(A) LOCATION: RESIN RAW STORAGE AREA								
Date	Unit	PM <sub>10</sub>	PM <sub>2.5</sub>	SO <sub>2</sub>	NO <sub>2</sub>	Benzene	Toluene	Xylene
02.06.2014	(µg/m <sup>3</sup> )	89	36	11	23	1.41	0.88	2.44
05.06.2014	(µg/m <sup>3</sup> )	96	40	7	19	N.D.	N.D.	1.62
09.06.2014	(µg/m <sup>3</sup> )	114	49	8	22	0.67	0.42	2.03
12.06.2014	(µg/m <sup>3</sup> )	92	38	5	31	0.94	0.74	2.49
16.06.2014	(µg/m <sup>3</sup> )	102	46	8	26	N.D.	N.D.	1.83
19\06.2014	(µg/m <sup>3</sup> )	88	35	7	17	0.53	N.D.	2.56
23.06.2014	(µg/m <sup>3</sup> )	85	37	10	20	0.53	N.D.	N.D.
26.06.2014	(µg/m <sup>3</sup> )	76	31	9	12	0.48	0.56	0.96
(B) LOCATION: RESIN GROUND FLOOR (BLENDER AREA)								
Date	Unit	PM <sub>10</sub>	PM <sub>2.5</sub>	SO <sub>2</sub>	NO <sub>2</sub>	Benzene	Toluene	Xylene
02.06.2014	(µg/m <sup>3</sup> )	87	36	7	22	1.36	0.83	2.38
05.06.2014	(µg/m <sup>3</sup> )	82	34	13	28	N.D.	N.D.	1.56
09.06.2014	(µg/m <sup>3</sup> )	107	47	8	17	0.62	0.37	1.97
12.06.2014	(µg/m <sup>3</sup> )	96	39	10	32	0.89	0.69	6.82
16.06.2014	(µg/m <sup>3</sup> )	78	35	12	20	N.D.	N.D.	1.77
19\06.2014	(µg/m <sup>3</sup> )	106	48	9	18	0.48	N.D.	2.5
23.06.2014	(µg/m <sup>3</sup> )	90	39	11	30	0.48	N.D.	N.D.
26.06.2014	(µg/m <sup>3</sup> )	85	35	7	24	0.43	0.51	3.02

## Envirofotech East Pvt. Limited

An ISO 9001:2008, 14001:2004 & OHSAS:18001:2007 Company

Laboratory Recognised by Ministry of Environment & Forests, Govt. of India

Bengal Ambuja Commercial Complex,

UN-F 13, 1050/1, Survey Park, Kolkata – 700 075

☎ – 2418 8127/8128/8601; Fax – 2418 8128; email: [eeplkol@gmail.com](mailto:eeplkol@gmail.com)

### Annexure – II

(C) LOCATION: FIRST FLOOR OF RESIN PLANT (REACTOR AREA)								
Date	Unit	PM <sub>10</sub>	PM <sub>2.5</sub>	SO <sub>2</sub>	NO <sub>2</sub>	Benzene	Toluene	Xylene
02.06.2014	(µg/m <sup>3</sup> )	70	29	11	20	1.27	0.74	2.29
05.06.2014	(µg/m <sup>3</sup> )	88	37	5	16	N.D.	N.D.	1.47
09.06.2014	(µg/m <sup>3</sup> )	91	39	7	25	0.53	0.28	1.88
12.06.2014	(µg/m <sup>3</sup> )	112	46	8	14	0.8	0.6	2.34
16.06.2014	(µg/m <sup>3</sup> )	87	39	10	30	N.D.	N.D.	1.68
19\06.2014	(µg/m <sup>3</sup> )	98	39	9	15	0.39	N.D.	2.41
23.06.2014	(µg/m <sup>3</sup> )	101	43	11	18	0.39	N.D.	N.D.
26.06.2014	(µg/m <sup>3</sup> )	81	33	7	20	0.34	0.42	2.93
(D) LOCATION: THERMIC FLUID BOILER AREA								
Date	Unit	PM <sub>10</sub>	PM <sub>2.5</sub>	SO <sub>2</sub>	NO <sub>2</sub>	Benzene	Toluene	Xylene
02.06.2014	(µg/m <sup>3</sup> )	94	39	13	36	1.24	0.71	2.25
05.06.2014	(µg/m <sup>3</sup> )	86	36	17	23	N.D.	N.D.	1.43
09.06.2014	(µg/m <sup>3</sup> )	99	44	12	27	0.5	0.25	1.84
12.06.2014	(µg/m <sup>3</sup> )	103	47	16	32	0.77	0.57	2.3
16.06.2014	(µg/m <sup>3</sup> )	92	41	13	29	N.D.	N.D.	1.64
19\06.2014	(µg/m <sup>3</sup> )	81	36	17	27	0.36	N.D.	2.37
23.06.2014	(µg/m <sup>3</sup> )	99	43	15	19	0.36	N.D.	N.D.
26.06.2014	(µg/m <sup>3</sup> )	118	52	11	15	0.31	0.39	2.89

N.D. : Not detected

## Envirofotech East Pvt. Limited

An ISO 9001:2008, 14001:2004 & OHSAS:18001:2007 Company

Laboratory Recognised by Ministry of Environment & Forests, Govt. of India

Bengal Ambuja Commercial Complex,

UN-F 13, 1050/1, Survey Park, Kolkata – 700 075

☎ – 2418 8127/8128/8601; Fax – 2418 8128; email: [eeplkol@gmail.com](mailto:eeplkol@gmail.com)

Annexure – II

MONTH: JULY, 2014

(A) LOCATION: RESIN RAW STORAGE AREA								
Date	Unit	PM <sub>10</sub>	PM <sub>2.5</sub>	SO <sub>2</sub>	NO <sub>2</sub>	Benzene	Toluene	Xylene
04.07.2014	(µg/m <sup>3</sup> )	70	34	7	10	0.23	0.27	3.12
07.07.2014	(µg/m <sup>3</sup> )	67	27	9	20	N.D.	N.D.	N.D.
10.07.2014	(µg/m <sup>3</sup> )	53	23	6	25	0.29	0.23	1.18
14.07.2014	(µg/m <sup>3</sup> )	67	27	8	17	N.D.	N.D.	N.D.
18.07.2014	(µg/m <sup>3</sup> )	64	30	7	11	0.24	0.19	1.17
21.07.2014	(µg/m <sup>3</sup> )	80	34	6	15	N.D.	N.D.	1.08
25.07.2014	(µg/m <sup>3</sup> )	70	29	9	22	N.D.	N.D.	N.D.
28.07.2014	(µg/m <sup>3</sup> )	66	28	8	17	N.D.	N.D.	N.D.
(B) LOCATION: RESIN GROUND FLOOR (BLENDER AREA)								
Date	Unit	PM <sub>10</sub>	PM <sub>2.5</sub>	SO <sub>2</sub>	NO <sub>2</sub>	Benzene	Toluene	Xylene
04.07.2014	(µg/m <sup>3</sup> )	73	34	7	14	0.26	0.32	1.17
07.07.2014	(µg/m <sup>3</sup> )	65	29	8	16	N.D.	N.D.	N.D.
10.07.2014	(µg/m <sup>3</sup> )	77	36	10	12	0.32	0.26	1.23
14.07.2014	(µg/m <sup>3</sup> )	78	37	7	14	N.D.	N.D.	N.D.
18.07.2014	(µg/m <sup>3</sup> )	61	29	9	26	0.27	0.22	2.23
21.07.2014	(µg/m <sup>3</sup> )	82	41	8	13	N.D.	N.D.	1.13
25.07.2014	(µg/m <sup>3</sup> )	64	28	11	15	N.D.	N.D.	N.D.
28.07.2014	(µg/m <sup>3</sup> )	81	39	9	11	N.D.	N.D.	N.D.

## Envirofotech East Pvt. Limited

An ISO 9001:2008, 14001:2004 & OHSAS:18001:2007 Company

Laboratory Recognised by Ministry of Environment & Forests, Govt. of India

Bengal Ambuja Commercial Complex,

UN-F 13, 1050/1, Survey Park, Kolkata – 700 075

☎ – 2418 8127/8128/8601; Fax – 2418 8128; email: [eeplkol@gmail.com](mailto:eeplkol@gmail.com)

### Annexure – II

(C) LOCATION: FIRST FLOOR OF RESIN PLANT (REACTOR AREA)								
Date	Unit	PM <sub>10</sub>	PM <sub>2.5</sub>	SO <sub>2</sub>	NO <sub>2</sub>	Benzene	Toluene	Xylene
04.07.2014	(µg/m <sup>3</sup> )	57	24	6	15	0.13	0.17	0.42
07.07.2014	(µg/m <sup>3</sup> )	65	30	9	9	N.D.	N.D.	N.D.
10.07.2014	(µg/m <sup>3</sup> )	58	22	7	17	0.28	0.22	1.16
14.07.2014	(µg/m <sup>3</sup> )	52	19	11	13	N.D.	N.D.	N.D.
18.07.2014	(µg/m <sup>3</sup> )	56	22	8	11	0.23	0.18	2.16
21.07.2014	(µg/m <sup>3</sup> )	68	26	10	8	N.D.	N.D.	1.06
25.07.2014	(µg/m <sup>3</sup> )	58	24	7	13	N.D.	0.18	0.23
28.07.2014	(µg/m <sup>3</sup> )	60	22	9	24	N.D.	N.D.	N.D.
(D) LOCATION: THERMIC FLUID BOILER AREA								
Date	Unit	PM <sub>10</sub>	PM <sub>2.5</sub>	SO <sub>2</sub>	NO <sub>2</sub>	Benzene	Toluene	Xylene
04.07.2014	(µg/m <sup>3</sup> )	83	34	6	14	0.22	0.28	1.13
07.07.2014	(µg/m <sup>3</sup> )	75	32	8	21	0.24	0.3	N.D.
10.07.2014	(µg/m <sup>3</sup> )	67	29	7	12	N.D.	N.D.	0.98
14.07.2014	(µg/m <sup>3</sup> )	73	33	9	20	0.19	0.24	N.D.
18.07.2014	(µg/m <sup>3</sup> )	77	37	10	14	N.D.	N.D.	0.82
21.07.2014	(µg/m <sup>3</sup> )	63	30	7	17	0.42	0.38	1.09
25.07.2014	(µg/m <sup>3</sup> )	56	28	9	21	N.D.	N.D.	0.35
28.07.2014	(µg/m <sup>3</sup> )	64	29	6	22	N.D.	0.23	N.D.

N.D. : Not detected



## Envirotech East Pvt. Limited

An ISO 9001:2008, 14001:2004 & OHSAS:18001:2007 Company

Laboratory Recognised by Ministry of Environment & Forests, Govt. of India

Bengal Ambuja Commercial Complex,

UN-F 13, 1050/1, Survey Park, Kolkata – 700 075

☎ – 2418 8127/8128/8601; Fax – 2418 8128; email: [eeplkol@gmail.com](mailto:eeplkol@gmail.com)

Annexure – II

MONTH: AUGUST, 2014

(A) LOCATION: RESIN RAW STORAGE AREA								
Date	Unit	PM <sub>10</sub>	PM <sub>2.5</sub>	SO <sub>2</sub>	NO <sub>2</sub>	Benzene	Toluene	Xylene
01.08.2014	(µg/m <sup>3</sup> )	79	37	7	21	0.18	0.22	1.14
05.08.2014	(µg/m <sup>3</sup> )	73	35	8	26	N.D.	N.D.	N.D.
08.08.2014	(µg/m <sup>3</sup> )	57	26	6	30	0.23	0.32	0.42
11.08.2014	(µg/m <sup>3</sup> )	67	31	8	25	N.D.	N.D.	N.D.
15.08.2014	(µg/m <sup>3</sup> )	85	40	10	19	N.D.	N.D.	1.22
18.08.2014	(µg/m <sup>3</sup> )	58	29	8	23	0.16	0.26	2.18
22.08.2014	(µg/m <sup>3</sup> )	66	34	11	20	N.D.	N.D.	N.D.
25.08.2014	(µg/m <sup>3</sup> )	43	25	8	17	N.D.	N.D.	N.D.
(B) LOCATION: RESIN GROUND FLOOR (BLENDER AREA)								
Date	Unit	PM <sub>10</sub>	PM <sub>2.5</sub>	SO <sub>2</sub>	NO <sub>2</sub>	Benzene	Toluene	Xylene
01.08.2014	(µg/m <sup>3</sup> )	71	35	11	15	0.21	0.25	1.19
05.08.2014	(µg/m <sup>3</sup> )	65	33	7	30	N.D.	N.D.	N.D.
08.08.2014	(µg/m <sup>3</sup> )	74	42	8	13	0.26	0.35	0.47
11.08.2014	(µg/m <sup>3</sup> )	58	33	10	17	N.D.	N.D.	N.D.
15.08.2014	(µg/m <sup>3</sup> )	65	36	8	22	N.D.	N.D.	1.27
18.08.2014	(µg/m <sup>3</sup> )	89	49	5	16	0.19	0.29	2.23
22.08.2014	(µg/m <sup>3</sup> )	62	36	4	21	N.D.	N.D.	N.D.
25.08.2014	(µg/m <sup>3</sup> )	67	34	7	9	N.D.	N.D.	N.D.

## Envirotech East Pvt. Limited

An ISO 9001:2008, 14001:2004 & OHSAS:18001:2007 Company

Laboratory Recognised by Ministry of Environment & Forests, Govt. of India

Bengal Ambuja Commercial Complex,

UN-F 13, 1050/1, Survey Park, Kolkata – 700 075

☎ – 2418 8127/8128/8601; Fax – 2418 8128; email: [eeplkol@gmail.com](mailto:eeplkol@gmail.com)

### Annexure – II

(C) LOCATION: FIRST FLOOR OF RESIN PLANT (REACTOR AREA)								
Date	Unit	PM <sub>10</sub>	PM <sub>2.5</sub>	SO <sub>2</sub>	NO <sub>2</sub>	Benzene	Toluene	Xylene
03.08.2014	(µg/m <sup>3</sup> )	67	26	6	19	0.17	0.21	1.12
06.08.2014	(µg/m <sup>3</sup> )	73	30	10	10	N.D.	N.D.	N.D.
10.08.2014	(µg/m <sup>3</sup> )	67	30	9	13	0.22	0.31	0.42
13.08.2014	(µg/m <sup>3</sup> )	63	27	12	19	N.D.	N.D.	N.D.
17.08.2014	(µg/m <sup>3</sup> )	76	36	8	24	N.D.	N.D.	1.2
20.08.2014	(µg/m <sup>3</sup> )	61	29	11	17	0.15	0.25	2.16
24.08.2014	(µg/m <sup>3</sup> )	66	30	8	9	N.D.	N.D.	N.D.
27.08.2014	(µg/m <sup>3</sup> )	83	39	8	14	N.D.	N.D.	N.D.
(D) LOCATION: THERMIC FLUID BOILER AREA								
Date	Unit	PM <sub>10</sub>	PM <sub>2.5</sub>	SO <sub>2</sub>	NO <sub>2</sub>	Benzene	Toluene	Xylene
03.08.2014	(µg/m <sup>3</sup> )	69	33	11	15	N.D.	N.D.	0.68
06.08.2014	(µg/m <sup>3</sup> )	62	25	8	24	0.19	0.23	N.D.
10.08.2014	(µg/m <sup>3</sup> )	77	33	13	20	N.D.	N.D.	0.43
13.08.2014	(µg/m <sup>3</sup> )	87	43	7	32	0.24	0.33	N.D.
17.08.2014	(µg/m <sup>3</sup> )	79	35	9	16	N.D.	N.D.	1.23
20.08.2014	(µg/m <sup>3</sup> )	73	35	12	26	N.D.	N.D.	2.19
24.08.2014	(µg/m <sup>3</sup> )	67	30	10	30	0.17	0.27	N.D.
27.08.2014	(µg/m <sup>3</sup> )	63	42	7	12	N.D.	N.D.	N.D.

N.D. : Not detected

## Envirotech East Pvt. Limited

An ISO 9001:2008, 14001:2004 & OHSAS:18001:2007 Company

Laboratory Recognised by Ministry of Environment & Forests, Govt. of India

Bengal Ambuja Commercial Complex,

UN-F 13, 1050/1, Survey Park, Kolkata – 700 075

☎ – 2418 8127/8128/8601; Fax – 2418 8128; email: [eeplkol@gmail.com](mailto:eeplkol@gmail.com)

Annexure – II

MONTH: SEPTEMBER, 2014

(A) LOCATION: RESIN RAW STORAGE AREA								
Date	Unit	PM <sub>10</sub>	PM <sub>2.5</sub>	SO <sub>2</sub>	NO <sub>2</sub>	Benzene	Toluene	Xylene
01.09.2014	(µg/m <sup>3</sup> )	68	34	9	29	N.D.	N.D.	1.06
05.09.2014	(µg/m <sup>3</sup> )	74	33	11	19	0.20	N.D.	N.D.
08.09.2014	(µg/m <sup>3</sup> )	84	43	7	25	N.D.	N.D.	1.13
11.09.2014	(µg/m <sup>3</sup> )	70	36	10	32	0.16	0.21	0.36
15.09.2014	(µg/m <sup>3</sup> )	63	31	8	18	N.D.	N.D.	1.16
19.09.2014	(µg/m <sup>3</sup> )	77	39	11	24	0.24	0.21	1.09
22.09.2014	(µg/m <sup>3</sup> )	68	34	7	28	N.D.	N.D.	1.22
26.09.2014	(µg/m <sup>3</sup> )	78	41	9	20	0.21	0.28	0.62
(B) LOCATION: RESIN GROUND FLOOR (BLENDER AREA)								
Date	Unit	PM <sub>10</sub>	PM <sub>2.5</sub>	SO <sub>2</sub>	NO <sub>2</sub>	Benzene	Toluene	Xylene
01.09.2014	(µg/m <sup>3</sup> )	62	34	10	14	N.D.	N.D.	1.11
05.09.2014	(µg/m <sup>3</sup> )	67	37	6	21	0.23	N.D.	N.D.
08.09.2014	(µg/m <sup>3</sup> )	61	32	4	13	N.D.	N.D.	3.78
11.09.2014	(µg/m <sup>3</sup> )	79	44	7	22	0.19	0.24	0.41
15.09.2014	(µg/m <sup>3</sup> )	85	45	6	19	N.D.	N.D.	1.21
19.09.2014	(µg/m <sup>3</sup> )	61	34	8	29	0.27	0.24	1.14
22.09.2014	(µg/m <sup>3</sup> )	73	41	5	18	N.D.	N.D.	1.27
26.09.2014	(µg/m <sup>3</sup> )	62	34	9	25	0.24	0.31	0.67

## Envirofotech East Pvt. Limited

An ISO 9001:2008, 14001:2004 & OHSAS:18001:2007 Company

Laboratory Recognised by Ministry of Environment & Forests, Govt. of India

Bengal Ambuja Commercial Complex,

UN-F 13, 1050/1, Survey Park, Kolkata – 700 075

☎ – 2418 8127/8128/8601; Fax – 2418 8128; email: [eeplkol@gmail.com](mailto:eeplkol@gmail.com)

### Annexure – II

(C) LOCATION: FIRST FLOOR OF RESIN PLANT (REACTOR AREA)								
Date	Unit	PM <sub>10</sub>	PM <sub>2.5</sub>	SO <sub>2</sub>	NO <sub>2</sub>	Benzene	Toluene	Xylene
03.09.2014	(µg/m <sup>3</sup> )	68	32	6	18	N.D.	N.D.	1.04
06.09.2014	(µg/m <sup>3</sup> )	77	37	8	26	0.19	N.D.	N.D.
10.09.2014	(µg/m <sup>3</sup> )	80	38	7	19	N.D.	N.D.	2.56
13.09.2014	(µg/m <sup>3</sup> )	70	31	5	17	0.15	0.2	0.34
18.09.2014	(µg/m <sup>3</sup> )	73	33	11	20	N.D.	N.D.	1.14
22.09.2014	(µg/m <sup>3</sup> )	69	32	5	12	0.23	0.2	1.07
25.09.2014	(µg/m <sup>3</sup> )	65	31	8	15	N.D.	N.D.	1.2
29.09.2014	(µg/m <sup>3</sup> )	77	35	10	19	0.2	0.27	0.6
(D) LOCATION: THERMIC FLUID BOILER AREA								
Date	Unit	PM <sub>10</sub>	PM <sub>2.5</sub>	SO <sub>2</sub>	NO <sub>2</sub>	Benzene	Toluene	Xylene
03.09.2014	(µg/m <sup>3</sup> )	57	39	8	21	N.D.	N.D.	1.07
06.09.2014	(µg/m <sup>3</sup> )	74	36	11	20	N.D.	N.D.	N.D.
10.09.2014	(µg/m <sup>3</sup> )	59	42	7	11	0.21	N.D.	2.89
13.09.2014	(µg/m <sup>3</sup> )	48	34	10	14	N.D.	N.D.	0.37
18.09.2014	(µg/m <sup>3</sup> )	71	27	9	22	0.17	0.22	1.17
22.09.2014	(µg/m <sup>3</sup> )	62	41	13	17	N.D.	N.D.	1.1
25.09.2014	(µg/m <sup>3</sup> )	69	40	8	23	0.25	0.22	0.66
29.09.2014	(µg/m <sup>3</sup> )	75	42	15	32	N.D.	N.D.	0.63

N.D. : Not detected

## Envirotech East Pvt. Limited

An ISO 9001:2008, 14001:2004 & OHSAS:18001:2007 Company

Laboratory Recognised by Ministry of Environment & Forests, Govt. of India

Bengal Ambuja Commercial Complex,

UN-F 13, 1050/1, Survey Park, Kolkata – 700 075

☎ – 2418 8127/8128/8601; Fax – 2418 8128; email: [eeplkol@gmail.com](mailto:eeplkol@gmail.com)

Annexure – II

### STATISTICAL ANALYSIS OF POLLUTANTS, PERIOD: APRIL, 2014 TO JUNE, 2014

(A) PERIOD: APRIL, 2014 TO JUNE, 2014					
Pollutants	Locations	Min	Max	A.M.	P - 98
PM <sub>10</sub> (µg/m <sup>3</sup> )	Resin Raw Storage Area	76	141	100.8	140.1
	Resin Ground Floor (Blender Area)	72	116	93.7	115.5
	First Floor of Resin Plant (Reactor Area)	70	113	95.0	112.5
	Thermic fluid Boiler Area	77	118	96.8	117.1
	<b>Overall</b>	<b>70</b>	<b>141</b>	<b>96.6</b>	<b>138.7</b>
PM <sub>2.5</sub> (µg/m <sup>3</sup> )	Resin Raw Storage Area	31	63	43.2	62.3
	Resin Ground Floor (Blender Area)	31	52	40.5	51.5
	First Floor of Resin Plant (Reactor Area)	29	51	41.1	50.1
	Thermic fluid Boiler Area	32	52	42.2	51.5
	<b>Overall</b>	<b>29</b>	<b>62.55</b>	<b>41.7</b>	<b>61.7</b>
SO <sub>2</sub> (µg/m <sup>3</sup> )	Resin Raw Storage Area	5	14	9.6	14.0
	Resin Ground Floor (Blender Area)	7	14	9.8	13.5
	First Floor of Resin Plant (Reactor Area)	5	13	9.1	12.5
	Thermic fluid Boiler Area	7	18	12.5	17.5
	<b>Overall</b>	<b>5</b>	<b>18</b>	<b>10.3</b>	<b>17.3</b>
NO <sub>2</sub> (µg/m <sup>3</sup> )	Resin Raw Storage Area	12	37	24.8	36.1
	Resin Ground Floor (Blender Area)	17	40	27.5	39.1
	First Floor of Resin Plant (Reactor Area)	14	39	23.8	37.2
	Thermic fluid Boiler Area	13	36	26.8	36.0
	<b>Overall</b>	<b>12</b>	<b>40</b>	<b>25.7</b>	<b>39.0</b>

For ENVIROTECH EAST (P) LIMITED

## Envirotech East Pvt. Limited

An ISO 9001:2008, 14001:2004 & OHSAS:18001:2007 Company

Laboratory Recognised by Ministry of Environment & Forests, Govt. of India

Bengal Ambuja Commercial Complex,

UN-F 13, 1050/1, Survey Park, Kolkata – 700 075

☎ – 2418 8127/8128/8601; Fax – 2418 8128; email: [eeplkol@gmail.com](mailto:eeplkol@gmail.com)

### Annexure – II

<b>Benzene</b> ( $\mu\text{g}/\text{m}^3$ )	Resin Raw Storage Area	0.48	1.41	0.83	1.39
	Resin Ground Floor (Blender Area)	0.43	1.63	0.82	1.62
	First Floor of Resin Plant (Reactor Area)	0.43	1.72	0.80	1.58
	Thermic fluid Boiler Area	0.31	1.51	0.70	1.50
	<b>Overall</b>	<b>0.31</b>	<b>1.72</b>	<b>0.79</b>	<b>1.62</b>
<b>Toluene</b> ( $\mu\text{g}/\text{m}^3$ )	Resin Raw Storage Area	1.47	6.06	2.87	5.69
	Resin Ground Floor (Blender Area)	0.29	1.42	0.69	1.38
	First Floor of Resin Plant (Reactor Area)	0.20	1.33	0.60	1.29
	Thermic fluid Boiler Area	0.17	1.30	0.57	1.26
	<b>Overall</b>	<b>0.17</b>	<b>6.06</b>	<b>1.18</b>	<b>5.43</b>
<b>Xylene</b> ( $\mu\text{g}/\text{m}^3$ )	Resin Raw Storage Area	0.96	6.06	2.77	5.69
	Resin Ground Floor (Blender Area)	0.62	6.82	2.71	5.90
	First Floor of Resin Plant (Reactor Area)	0.53	5.46	2.48	5.09
	Thermic fluid Boiler Area	0.49	4.92	2.40	4.56
	<b>Overall</b>	<b>0.49</b>	<b>6.82</b>	<b>2.59</b>	<b>5.88</b>

N.B.: Min: Minimum, Max: Maximum, A.M.: Arithmetic mean, P-98: 98 percentile

## Envirofotech East Pvt. Limited

An ISO 9001:2008, 14001:2004 & OHSAS:18001:2007 Company

Laboratory Recognised by Ministry of Environment & Forests, Govt. of India

Bengal Ambuja Commercial Complex,

UN-F 13, 1050/1, Survey Park, Kolkata – 700 075

☎ – 2418 8127/8128/8601; Fax – 2418 8128; email: [eeplkol@gmail.com](mailto:eeplkol@gmail.com)

### Annexure – II

#### STATISTICAL ANALYSIS OF POLLUTANTS, PERIOD: JULY, 2014 TO SEPT., 2014

(B) PERIOD: JULY, 2014 TO SEPT., 2014					
Pollutants	Locations	Min	Max	A.M.	P - 98
PM <sub>10</sub> (µg/m <sup>3</sup> )	Resin Raw Storage Area	43	85	68.6	84.5
	Resin Ground Floor (Blender Area)	58	89	70.1	87.2
	First Floor of Resin Plant (Reactor Area)	52	83	67.0	81.6
	Thermic fluid Boiler Area	48	87	68.8	85.2
	<b>Overall</b>	<b>43</b>	<b>89</b>	<b>68.6</b>	<b>87.0</b>
PM <sub>2.5</sub> (µg/m <sup>3</sup> )	Resin Raw Storage Area	23	43	32.5	42.1
	Resin Ground Floor (Blender Area)	28	49	36.3	47.4
	First Floor of Resin Plant (Reactor Area)	19	39	29.3	38.6
	Thermic fluid Boiler Area	25	43	34.6	43.0
	<b>Overall</b>	<b>18.8</b>	<b>49.22</b>	<b>33.2</b>	<b>47.2</b>
SO <sub>2</sub> (µg/m <sup>3</sup> )	Resin Raw Storage Area	6	11	8.3	11.0
	Resin Ground Floor (Blender Area)	4	11	7.7	11.0
	First Floor of Resin Plant (Reactor Area)	5	12	8.3	11.5
	Thermic fluid Boiler Area	6	15	9.2	14.1
	<b>Overall</b>	<b>4</b>	<b>15</b>	<b>8.3</b>	<b>13.9</b>
NO <sub>2</sub> (µg/m <sup>3</sup> )	Resin Raw Storage Area	10	32	21.4	31.1
	Resin Ground Floor (Blender Area)	9	30	17.7	29.5
	First Floor of Resin Plant (Reactor Area)	8	26	15.9	25.1
	Thermic fluid Boiler Area	11	32	19.8	32.0
	<b>Overall</b>	<b>8</b>	<b>32</b>	<b>18.7</b>	<b>31.9</b>
Benzene (µg/m <sup>3</sup> )	Resin Raw Storage Area	0.16	0.29	0.21	0.28
	Resin Ground Floor (Blender Area)	0.19	0.32	0.24	0.31
	First Floor of Resin Plant (Reactor Area)	0.13	0.28	0.20	0.27
	Thermic fluid Boiler Area	0.17	0.42	0.23	0.39

For ENVIROTECH EAST (P) LIMITED

## Envirotech East Pvt. Limited

An ISO 9001:2008, 14001:2004 & OHSAS:18001:2007 Company

Laboratory Recognised by Ministry of Environment & Forests, Govt. of India

Bengal Ambuja Commercial Complex,

UN-F 13, 1050/1, Survey Park, Kolkata – 700 075

☎ – 2418 8127/8128/8601; Fax – 2418 8128; email: [eeplkol@gmail.com](mailto:eeplkol@gmail.com)

### Annexure – II

	Overall	0.13	0.42	0.22	0.38
Toluene ( $\mu\text{g}/\text{m}^3$ )	Resin Raw Storage Area	0.19	0.32	0.24	0.31
	Resin Ground Floor (Blender Area)	0.22	0.35	0.28	0.35
	First Floor of Resin Plant (Reactor Area)	0.17	0.31	0.22	0.30
	Thermic fluid Boiler Area	0.22	0.38	0.27	0.37
	<b>Overall</b>	<b>0.17</b>	<b>0.38</b>	<b>0.25</b>	<b>0.37</b>
Xylene ( $\mu\text{g}/\text{m}^3$ )	Resin Raw Storage Area	0.36	3.12	1.21	2.86
	Resin Ground Floor (Blender Area)	0.41	3.78	1.37	3.35
	First Floor of Resin Plant (Reactor Area)	0.23	2.56	1.12	2.44
	Thermic fluid Boiler Area	0.35	2.89	1.05	2.68
	<b>Overall</b>	<b>0.23</b>	<b>3.78</b>	<b>1.19</b>	<b>3.32</b>

N.B.: Min: Minimum, Max: Maximum, A.M.: Arithmetic mean, P-98: 98 percentile



# Envirotech East Pvt. Limited

An ISO 9001:2008, 14001:2004 & OHSAS:18001:2007 Company

Laboratory Recognised by Ministry of Environment & Forests, Govt. of India

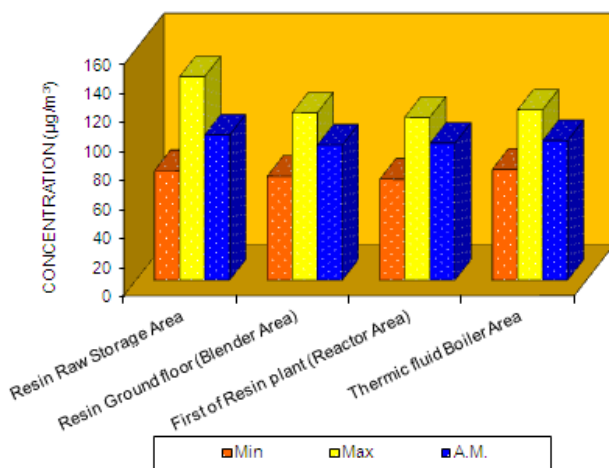
Bengal Ambuja Commercial Complex,  
UN-F 13, 1050/1, Survey Park, Kolkata – 700 075

☎ – 2418 8127/8128/8601; Fax – 2418 8128; email: [eeplkol@gmail.com](mailto:eeplkol@gmail.com)

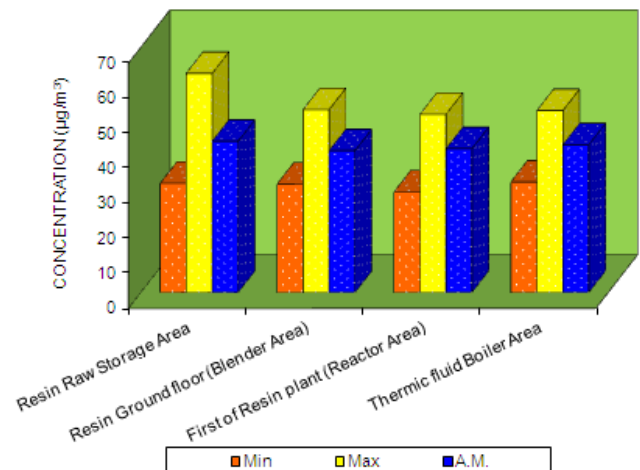
## Annexure – II

### GRAPHICAL PRESENTATION OF STATISTICAL ANALYSIS RESULTS (PERIOD: APRIL, 2014 TO JUNE, 2014)

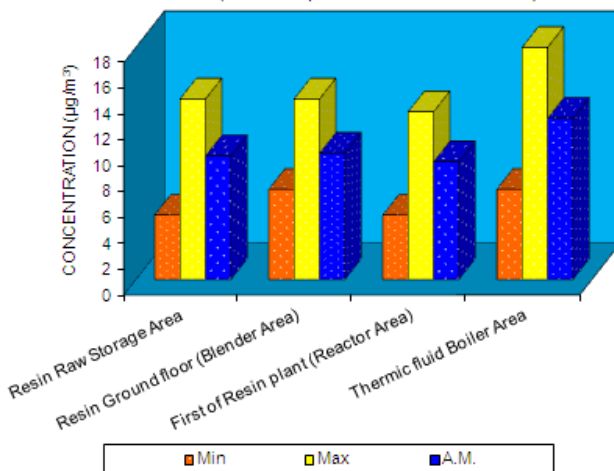
STATISTICAL ANALYSIS RESULTS OF PM<sub>10</sub>  
(Period: April, 2014 TO June, 2014)



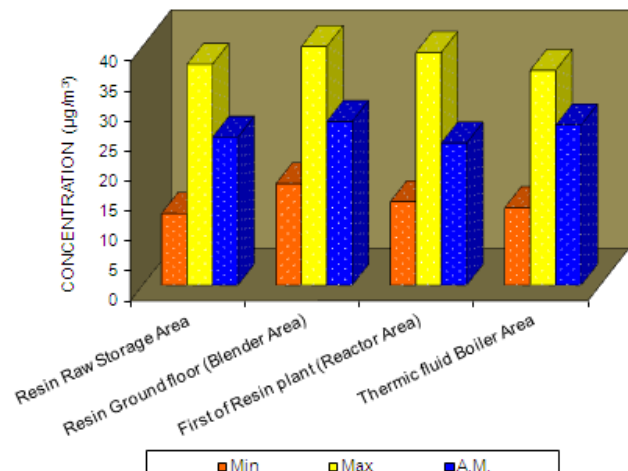
STATISTICAL ANALYSIS RESULTS OF PM<sub>2.5</sub>  
(Period: April, 2014 TO June, 2014)



STATISTICAL ANALYSIS RESULTS OF SO<sub>2</sub>  
(Period: April, 2014 TO June, 2014)



STATISTICAL ANALYSIS RESULTS OF NO<sub>2</sub>  
(Period: April, 2014 TO June, 2014)



# Envirotech East Pvt. Limited

An ISO 9001:2008, 14001:2004 & OHSAS:18001:2007 Company

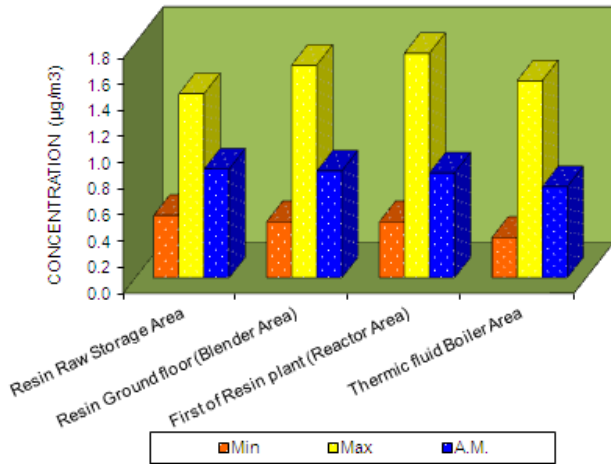
Laboratory Recognised by Ministry of Environment & Forests, Govt. of India

Bengal Ambuja Commercial Complex,  
UN-F 13, 1050/1, Survey Park, Kolkata – 700 075

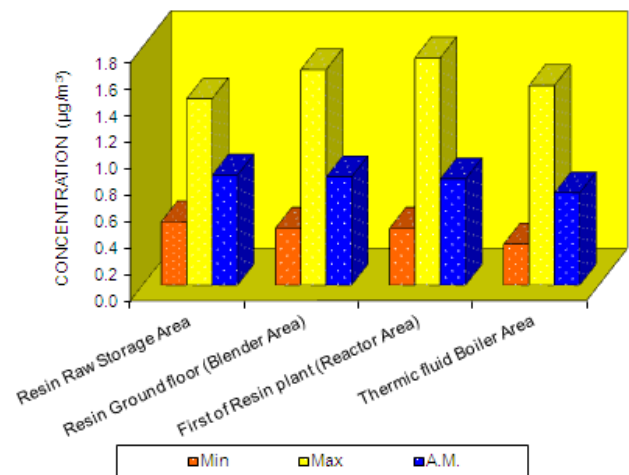
☎ – 2418 8127/8128/8601; Fax – 2418 8128; email: [eeplkol@gmail.com](mailto:eeplkol@gmail.com)

## Annexure – II

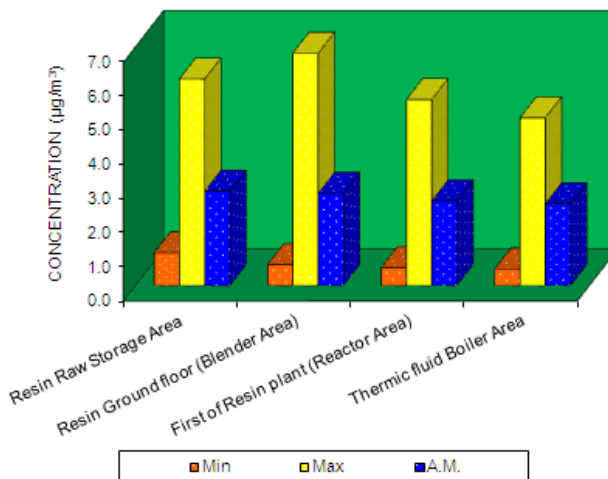
STATISTICAL ANALYSIS RESULTS OF BENZENE  
(Period: April, 2014 TO June, 2014)



STATISTICAL ANALYSIS RESULTS OF TOLUENE  
(Period: April, 2014 TO June, 2014)



STATISTICAL ANALYSIS RESULTS OF XYLENE  
(Period: April, 2014 TO June, 2014)



# Envirotech East Pvt. Limited

An ISO 9001:2008, 14001:2004 & OHSAS:18001:2007 Company

Laboratory Recognised by Ministry of Environment & Forests, Govt. of India

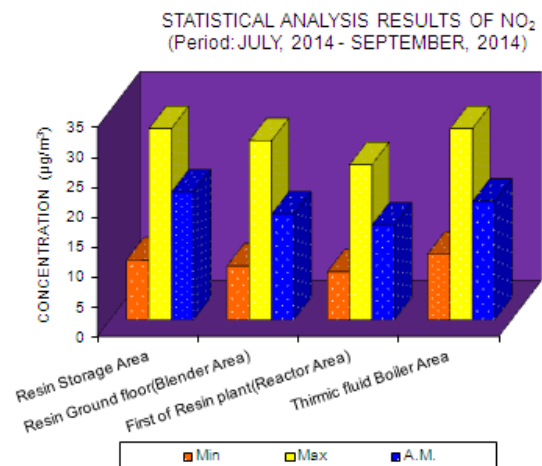
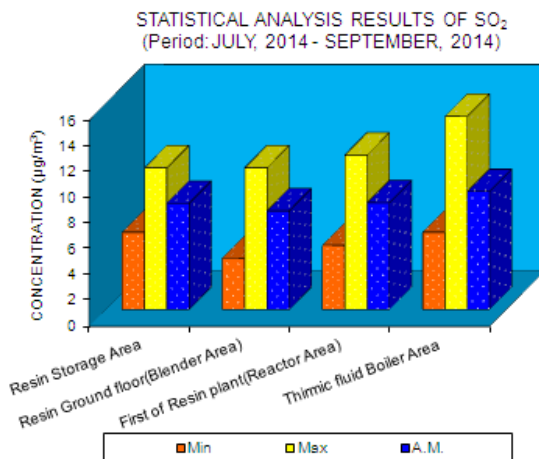
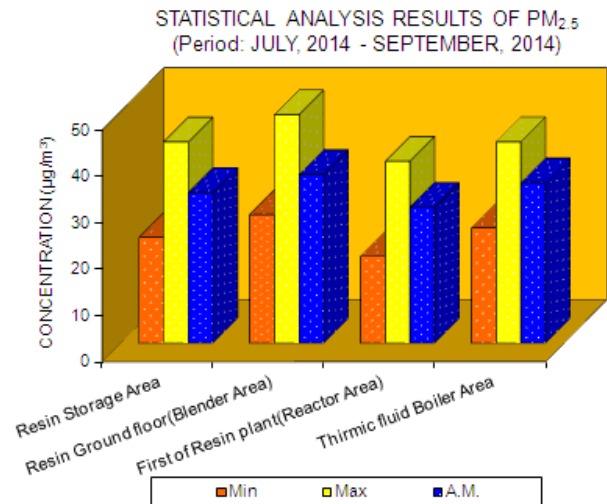
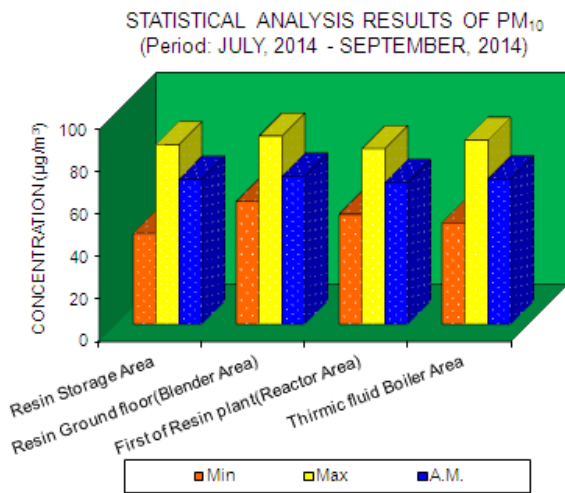
Bengal Ambuja Commercial Complex,

UN-F 13, 1050/1, Survey Park, Kolkata – 700 075

☎ – 2418 8127/8128/8601; Fax – 2418 8128; email: [eeplkol@gmail.com](mailto:eeplkol@gmail.com)

## Annexure – II

### GRAPHICAL PRESENTATION OF STATISTICAL ANALYSIS RESULTS (PERIOD: JULY, 2014 TO SEPTEMBER, 2014)



# Envirotech East Pvt. Limited

An ISO 9001:2008, 14001:2004 & OHSAS:18001:2007 Company

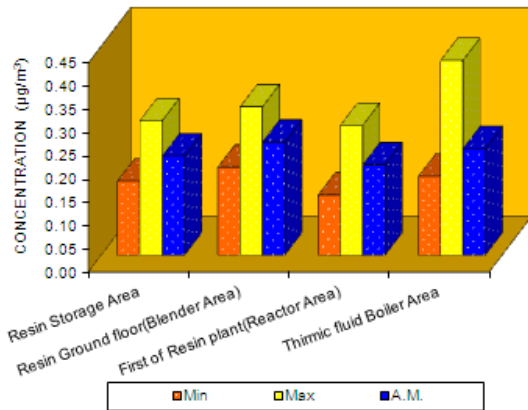
Laboratory Recognised by Ministry of Environment & Forests, Govt. of India

Bengal Ambuja Commercial Complex,  
UN-F 13, 1050/1, Survey Park, Kolkata – 700 075

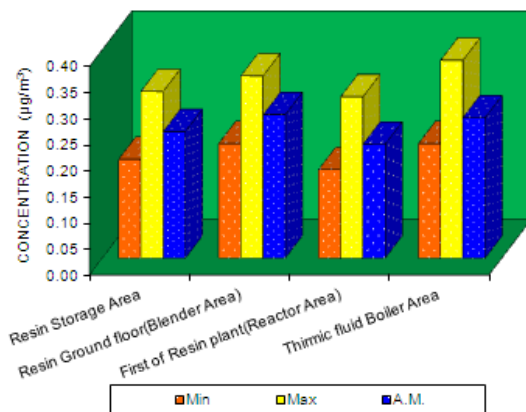
☎ – 2418 8127/8128/8601; Fax – 2418 8128; email: [eeplkol@gmail.com](mailto:eeplkol@gmail.com)

## Annexure – II

STATISTICAL ANALYSIS RESULTS OF BENZENE  
(Period: JULY, 2014 - SEPTEMBER, 2014)



STATISTICAL ANALYSIS RESULTS OF TOLUENE  
(Period: JULY, 2014 - SEPTEMBER, 2014)



STATISTICAL ANALYSIS RESULTS OF XYLENE  
(Period: JULY, 2014 - SEPTEMBER, 2014)

